

Studying Abroad at Monash

Presenter: Rikki Corry (Monash Abroad)

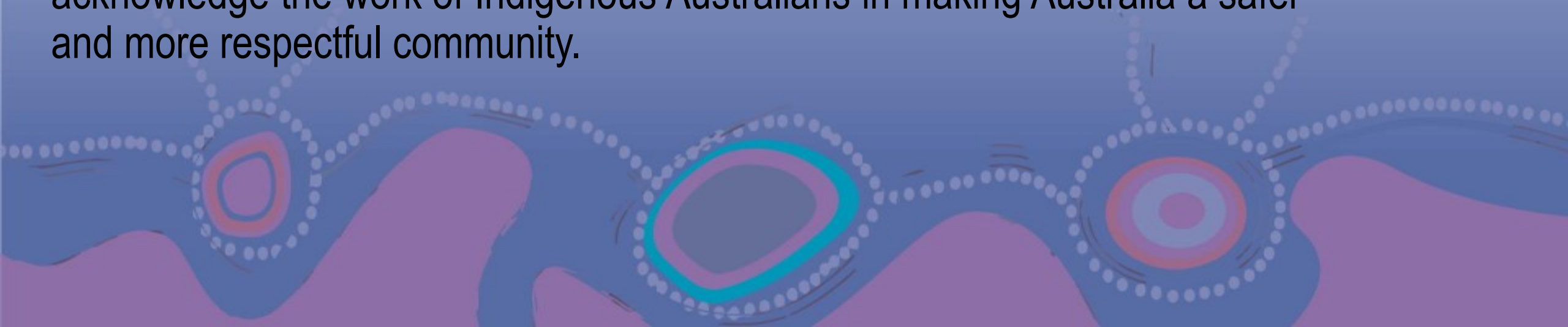


ACKNOWLEDGEMENT OF COUNTRY

Monash acknowledges the people of the Kulin Nations, on whose unceded land our Caulfield, Clayton and Peninsula campuses stand.

We acknowledge the Wurundjeri people, on whose unceded land our Parkville campus stands.

We pay our respects to their Elders, past, present and emerging, and acknowledge the work of Indigenous Australians in making Australia a safer and more respectful community.



MONASH IS A GLOBAL UNIVERSITY WITH A PRESENCE ON THREE CONTINENTS AND AMBITIOUS PLANS FOR THE FUTURE

As a young university, our outlook is progressive and optimistic.

We are focused on empowering our people to make positive and lasting impact.

- Established 1958
- 347 students commenced in 1961
- Now Australia's largest university

Video Links

Study Abroad at Monash - <https://youtu.be/EVrAyCrir6E>

Welcome to Monash University - https://www.youtube.com/watch?v=969i7d4g_ZE

These videos will provide you with a great overview of why Monash is a great place to come on exchange!

Want more?

In addition, there is a co-curricular free web-based video series exploring our nation's history called [Australian Journey](https://www.monash.edu/arts/monash-intercultural-lab/co-curricular-programs/australian-journey) that you are welcome to do in preparation for your experience. The Australian Journey video series explores issues including the Australian environment, Aboriginal and Torres Strait Islander culture and history, democracy and citizenship, immigration and multiculturalism, reconciliation and the Anzac legend.

<https://www.monash.edu/arts/monash-intercultural-lab/co-curricular-programs/australian-journey>

OUR GLOBAL FOOTPRINT

100+
partner
universities



PRATO, ITALY

MUMBAI, INDIA

JAKARTA, INDONESIA

MELBOURNE, AUSTRALIA LOCATIONS:
CLAYTON | CAULFIELD | PARKVILLE | PENINSULA

SUZHOU, CHINA

KUALA LUMPUR, MALAYSIA



STUDY ABROAD
EXPERIENCES

890+

INCOMING TO AUSTRALIA

5700+

OUTGOING TO PLACES
AROUND THE WORLD

LIVING IN MELBOURNE - AUSTRALIA

Melbourne is one of the most livable cities in the world!

Accessible public transport

An outdoor lifestyle

Cultural capital of Australia

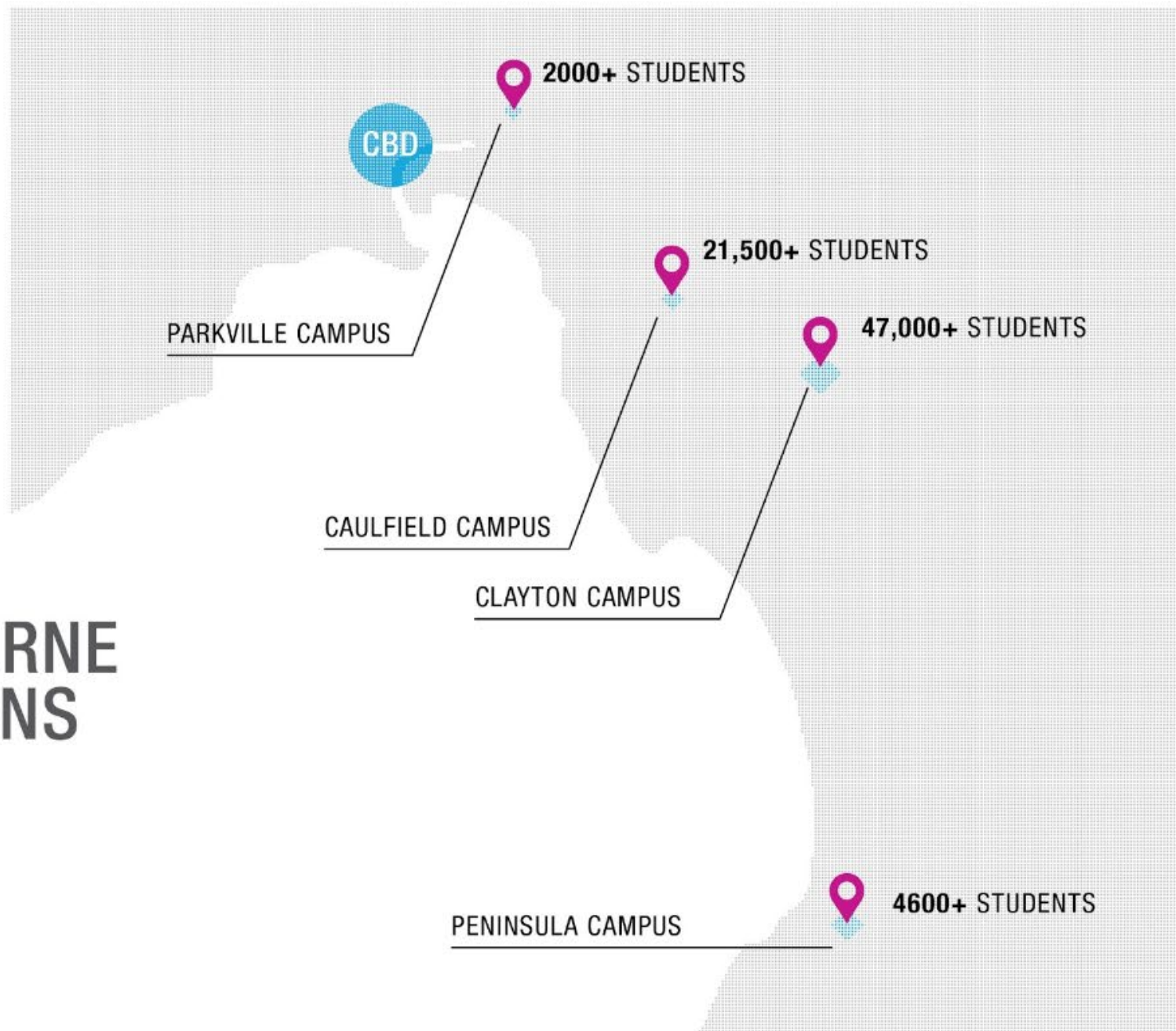
Arts & Theatre

Safe & Inclusive



OUR AUSTRALIAN CAMPUSES

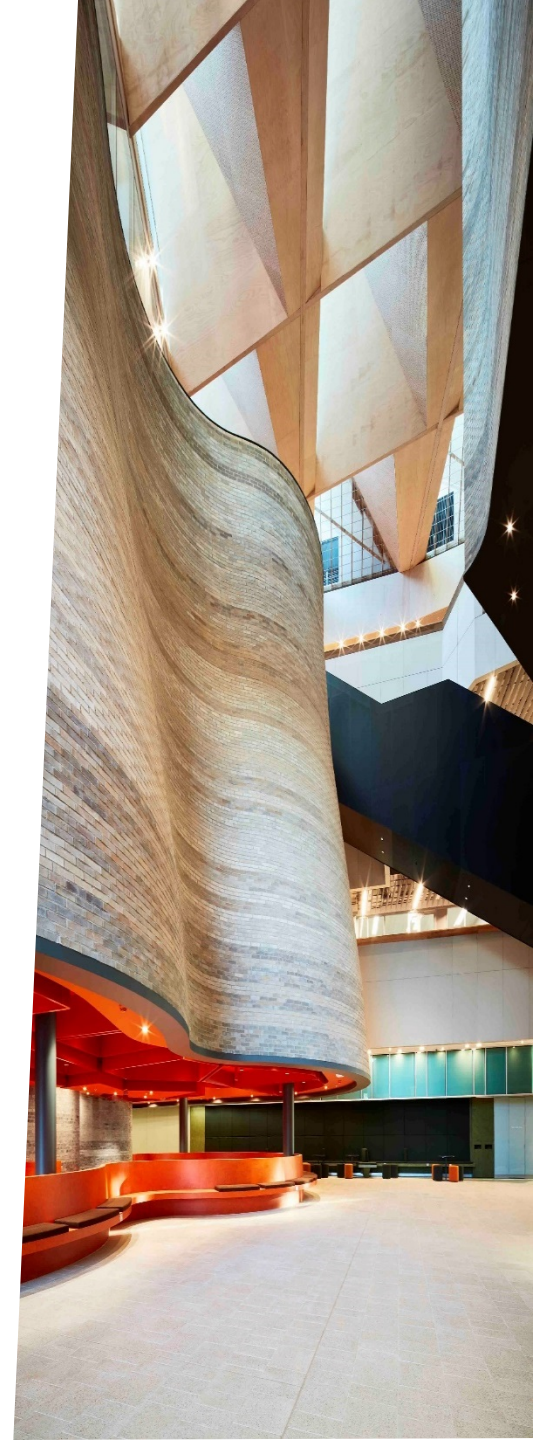
4 MELBOURNE LOCATIONS



MONASH CAMPUSES - AUSTRALIA

Clayton the largest and main campus, 20km/12 miles from the City of Melbourne

- 8 faculties located at Clayton
- Live and study with a diverse population of students from a range of cultures, nationalities, religions and lifestyles
- On-campus accommodation in traditional residence halls or studio apartments
- Huge array of on-campus sporting, cultural, and educational events and facilities
- Well connected to all areas of Melbourne via a networked transportation service. Exchange students receive concession rates
- [Virtual Clayton](#)



MONASH CAMPUSES - AUSTRALIA



Caulfield is the second largest campus, 9km/6 miles from the City of Melbourne

- 5 faculties located at Caulfield
- Free intercampus shuttle bus with Clayton; take units at both campuses in the same semester
- Train station across from campus
- Clubs, societies, student engagement and a renowned art museum!
- Non-residential colleges



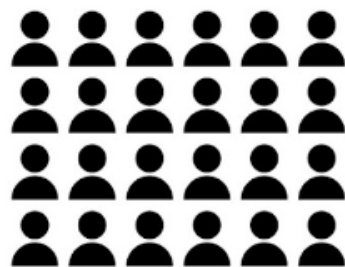
OUR PEOPLE

86,750+

STUDENTS
FROM MORE
THAN

160

COUNTRIES



17,900+
STAFF

4

MAJOR
AUSTRALIAN
CAMPUSES



52% DOMESTIC STUDENTS

35% INTERNATIONAL STUDENTS

13% OFFSHORE STUDENTS

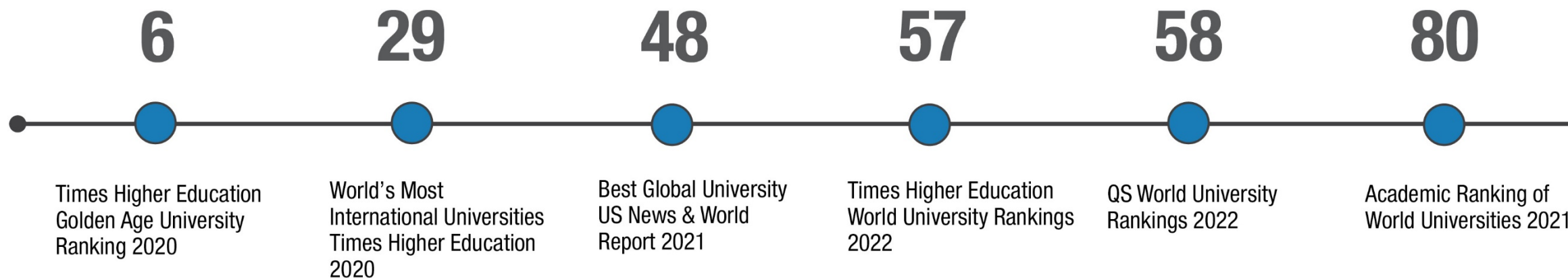


420,000+

IN OUR GLOBAL
ALUMNI COMMUNITY

OUR RANKINGS

TOP 100 UNIVERSITIES



#66
EMPLOYABILITY



**GLOBAL UNIVERSITY GRADUATE
EMPLOYABILITY RANKING**
(QS World University Rankings 2020)



**THE GOOD UNIVERSITIES GUIDE 2021
AWARDED MONASH FIVE STARS FOR:**

- Staff qualification
- Student demand

ELIGIBILITY CRITERIA FOR EXCHANGE

- Completed at least 1 year of a degree by commencement of Exchange
- Achieved a minimum grade point average (GPA) of 3.0, overall or 60% average, or home university equivalent to 'Credit' Average
- Meet minimum English language [requirements](#)
- Have available to study a full-time load of 18-24 credit points per semester, on-campus at Monash (normally 3 or 4 units).



SEMESTER SCHEDULE (ALL CAMPUSES)

Academic year – February to November split into 2 equal semesters with a dedicated Monash Abroad orientation prior to classes commencing

Semester one: Late February/early March to late June

Semester two: Late July to late November

Each semester has 12 weeks of classes, a mid-semester break, followed by 1 week study leave and a 3 week exam period.

*Can commence exchange in either of these semesters

Your Australian student visa allows you to stay and travel until the end of July for Semester one commencement, or the end of January for Semester two commencement

THE ACADEMIC SIDE OF EXCHANGE

Most units are worth 6 credit points = 7.5 ECTS/15 CATS. A normal full-time load per semester at Monash is 24 credit points which is 4 units (modules).

Each unit has approximately 3 – 4 contact hours per week. Most units will consist of a 1 hour lecture and 2 – 3 hours of tutorials, lab or studio.

Lectures consist of a large number of students, then students are split into smaller, more personalised tutorial groups.

Assessment varies for each unit but may be made up of written assignments (or tests) throughout the semester and an exam at the end of the semester.

<https://handbook.monash.edu/search>



Academic support services are available for students who may not be familiar with writing assignments or need academic guidance

HANDBOOK ENTRY EXAMPLE

Social justice and Indigenous Au x

https://handbook.monash.edu/2021/units/ATS1250

Not

ATS1250 - Social justice and Indigenous Australians

You are viewing the 2021 version | 2021 v ⓘ

Overview

Offerings

Rules

Contacts

Learning outcomes

Assessment summary

Assessment

Workload requirements

Availability in areas of study

Overview

The unit introduces students to ideas of social justice and Indigenous rights, focusing on the role of the state and its obligations to the international community, and Aboriginal human and civil rights and self-determination. Students will gain an appreciation of issues of Aboriginal sovereignty, land rights and native title. The unit considers histories of ideas of social justice and

[Read more](#)

Offerings

Expand all

S2-01-CLAYTON-ON-CAMPUS

Location:

Clayton

Teaching period:

Second semester

Attendance mode:

On-campus

Faculty:
Faculty of Arts

Owning organisational unit:
Monash Indigenous Studies Centre

Study level:
Undergraduate

SCA band:
4

EFTSL:
0.125

Credit points:
6

WHAT CAN I STUDY?

- Monash has 10 Faculties with all offering units for inbound students.
- Units may be chosen from one faculty or across the University as long as you have the prerequisites and there are no restrictions on admission to the units.
- The handbook is updated in October however you can use the current handbook as a reference if necessary, as the unit offerings do not change too much each year.
- You may need permission from the owning faculty to enrol in some units such as MADA units which require a portfolio. Refer to 'academic considerations' on our website for an overview of restrictions.

ACCOMMODATION



On-campus accommodation (Monash Residential Services)

- Most students live in the Clayton Halls of Residence (traditional dorms). Also studio apartments. No accommodation at Caulfield campus.
 - Single person rooms with shared bathrooms and kitchens. Laundry and all amenities are included.
 - Affordable café near halls, close to on-campus restaurants and a supermarket
 - Social activities throughout the semester
 - Great place to make friends, both Australian and international
- www.mrs.monash.edu

Off-campus accommodation:

- Live in a fantastic Melbourne neighborhood, advice and assistance offered on arrival to Monash.
- MRS can assist you in finding suitable off-campus accommodation and we can also help to advise you on the best areas to live.

FEES AND COSTS

- Information about living costs for international students can be found [here](#). Be mindful that this information is primarily for international students completing full degrees. You can also get an idea of general living costs in Melbourne [here](#).
- [Overseas Student Health Cover \(OSHC\)](#) is an Australian Government requirement – approximate cost is \$330 - \$423 per semester.
- [On-campus accommodation](#) - (Clayton) \$260/ week (average)
- [Australian student visa](#) – From AUD \$620

HOW TO APPLY

All exchange student applications must go through your home institution outbound exchange office so please keep in touch with them to ensure you apply in time for their internal deadlines.

Monash Abroad application details

<https://www.monash.edu/study-abroad/inbound/apply>

Once nominated by your home institution, you will receive a link to complete your application through our online portal, *my.application*

Monash Abroad Deadlines

Semester one (February-June): November 1

Semester two (July-November): April 1

THANK YOU

FIND OUT MORE AT <https://www.monash.edu/study-abroad/inbound>

LIKE [@monashabroadinbound](#) ON FACEBOOK

CONTACT ME DIRECTLY

Rikki Corry *International Education Coordinator, Global Inbound (Exchange)*

E: monashabroad.inboundstudents@monash.edu