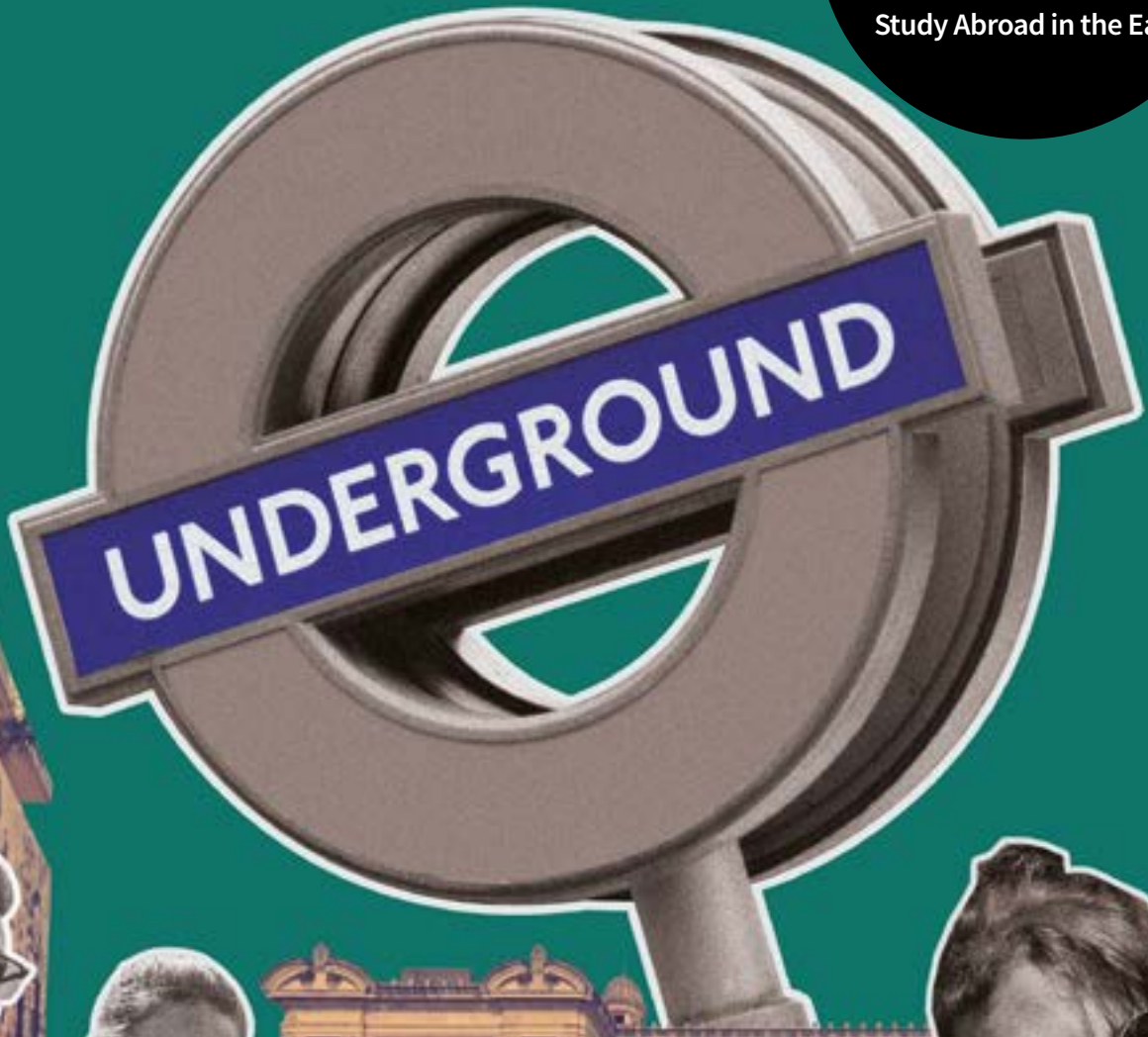




Queen Mary
University of London

LONDON'S CALLING

Study Abroad in the East



qmul.ac.uk

Contents


Welcome	3
Why Choose Queen Mary	4
My Queen Mary	6
Location	8
The Study Abroad Programme	10
Student Life	12
How to Apply	14
London Tube Map	16
Mile End Campus	17

Welcome

to Queen Mary University of London

London is the ultimate capital city; a cosmopolitan mecca encompassing a rich heritage, breath-taking architecture, diverse culture and world-class study opportunities. Queen Mary University of London perfectly embodies the city's dynamic and exciting nature. The University's East End location offers a true taste of London life in one of the most urban, trendy and progressive areas of the capital. Founded in 1887 Queen Mary University of London is a vibrant, dynamic and ambitious institution. Its Study Abroad Programme attracts inquisitive and high achieving students worldwide, who thrive in the stimulating and supportive environment the university offers. Campus life at Queen Mary offers our study abroad students an experience unlike any other. Our Student Village offers full integration for students and the vast number of clubs, societies and social events ensure an engaging and well-rounded experience. You will have the opportunity

to make friends from across the globe, study alongside inspirational and forward-thinking students, receive support and guidance from dedicated staff, as well as teaching from world-leading academics. Our Global Opportunities Office has been welcoming students for over thirty years and delivers an outstanding student experience. Queen Mary is committed to ensuring our students have the most memorable and enriching experience possible. The university is a supportive and engaging community producing outstanding alumni and we look forward to welcoming you to experience Queen Mary for yourself!



Ceri Bevan



Why Choose Queen Mary?

27,000+ students in total*

- Only university in London able to offer an attractive residential campus at our home in Mile End
- Short walk from the creative and social hubs of Brick Lane and Shoreditch, and close to London's financial centres, the City and Canary Wharf
- Set beside the Regent's Canal in Mile End, our main campus is one stop on the Tube from Stratford's Queen Elizabeth Olympic Park, and minutes from the West End.

LOCATION

R

REPUTATION

- Member of the Russell Group – one of the UK's 24 leading universities
- Ranked 110 in the world and number 12 in the UK, in the Times Higher Education (THE) World University Rankings 2020
- Nine Nobel Prize-winners among former staff and alumni
- Distinguished history, dating back to 1123 (the foundation of St Bartholomew's Hospital)
- Part of the internationally recognised University of London (UoL).

C

CAMPUS LIFE

- Study on a fully immersive study abroad programme
- Live with full degree and other study abroad students who are from the UK and overseas
- Study in the same classes as our full degree students
- Our award-winning, self-contained campus is set beside the Regent's Canal, looking on to Mile End Park.



ACADEMIC CROSS REGISTRATION

- over 950 modules (classes) available to study abroad students across 14 academic schools
- modules available in STEM subject areas including: Biological and Chemical Science, Global Health, Engineering and Materials Science, Mathematics, Electronic Engineering and Computer Science.

S

1,000+ study abroad students*

9 Nobel Prize Winners

SUPPORT

- We have a dedicated Global Opportunities Team to help support our study abroad students
- Comprehensive Welcome Programme and Orientation
- A range of welcome events
- Peer mentors available through our Buddy Scheme for study abroad students
- Access to all support services at the University, as well as dedicated Study Abroad Co-ordinators in every academic school.

from over 160 nationalities*



WE ARE INTERNATIONAL

- A truly international experience in one of the most culturally diverse areas of London
- Students from more than 160 nationalities studying at Queen Mary
- Queen Mary is in the top 20 universities for international students (Times Higher 2018)
- Our students' union (QMSU) supports, advocates and celebrates a wide range of students and has Welfare Representatives who represent the needs and voices of various student groups, including LGBT+ Representative, Multi-Cultural Representative, Disabled Students' Representative, International Students' Representative
- International partnerships with top international institutions globally including University of California, University of Miami, Columbia University, University of Melbourne, University of Guadalajara, University of Toronto, Sichuan University, Xiamen University, Nanyang Technological University to name but a few.

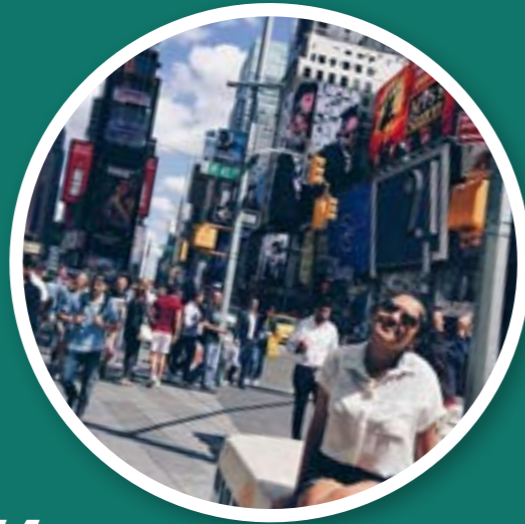
My Queen Mary

Don't just take our word for it, find out what our students love about Queen Mary.

“

As somebody who has a passion for traveling, I can safely say Queen Mary is more than just a university – providing me with the chance to study in the U.S., expedition in Asia and analyse the politics of Europe, Queen Mary has not only been an endless source of global opportunities for me but also an anchor.

Roberta, BA Politics



“

Whenever I think of my year abroad in London, I struggle to put into words how much it meant to me, how much I learned, and how much I loved the entire experience. I could spend the morning in class, the afternoon in a rehearsal, and the evening sitting in a theatre on the West End, and to me, that was the perfect way to combine the academic world with what I enjoyed extracurricularly. I fell in love with London and part of that love is thanks to the opportunities granted to me at Queen Mary.

Miriam, Study Abroad student, Scripps College, CA



“

The tutorial system here has been a great facilitator of balance while abroad. With every excursion, there are hours of school work getting done at a pace that satisfies my curiosity as well as my learning style. I feel as though I'm really taking ownership of my education. The resources are here at Queen Mary, you just have to be a self-starter and really grab onto them.”

Sharon, Study Abroad student, Hamilton College, NY.



“

So many opportunities have made my time at Queen Mary special. One of my most enjoyable experiences is being part of Queen Mary's Netball Society, and I would advise anybody who is part of Queen Mary to join a society to make uni life truly memorable.

Charlotte, LLB Law



“

London may seem daunting at first glance: it's busy, rushed and something is always happening. However QM's tight-knit campus, Harry Potter and Cheerleading societies makes the city feel more comfortable and homey. Whether you want to go for drinks at the Shard or roam Camden Market, you can return to campus to relax and regroup after a busy day.

Shola, BA English



“

I would argue that anyone who visits London should make spending time in the East End a priority of their trip. It is a place that emphasizes living with difference, living as a community, and enjoying all that life has to offer. To say that I'm grateful for my time here, especially in the East End, would be an understatement.

Rachel, Study Abroad student, Wesleyan University, MA



“

Queen Mary has a very special place in my heart. It has provided me with opportunities that few other universities could, it has allowed me to express myself both personally and academically and I'm incredibly optimistic about my future. Not only has it been my home for two years, but it has opened up a new world for me to explore, new people to meet and new things to learn, and for that reason I could not be more grateful.

Kyran, BA History



Location

A day in East London

Ask any twenty-something Londoner the best place to explore and live in London and chances are east London will be up there on the list! Queen Mary is situated in the heart of east London in one of the city's most vibrant and cosmopolitan areas – our very own version of a hipster downtown location. Think what Brooklyn is to NYC or Downtown Philadelphia and you get the idea. The East offers contrasts unlike any other area of London, from the bustle of street markets to peaceful walks along Regent's Canal and through Victoria Park, traditional pubs, museums, start-ups and art galleries. Studying at Queen Mary gives you a unique East End experience where you can enjoy authentic London life and get a true taste of life as a local.



9 AM

FIND A COFFEE SPOT
Start the day with a walk along Regent's Canal (right next to Queen Mary campus) and head towards Victoria Park for a coffee at Pavillion Café overlooking the water.



HIT A MARKET

Stroll along to Roman Road market (a 150 year old East End market) and admire the clothes, food and vintage finds. If vintage clothes and records are your thing, you could also visit Brick Lane Market. Don't miss Beigel Bake and The Vintage Emporium whilst you're there!



10 AM

11.30 AM

EXPLORE SOME STREET ART
You can't have a day exploring Shoreditch and not take some time out to look at the incredible street art. The colourful streets are great for photo opportunities!



GRAB SOME LUNCH

East London is home to some of the best food from around the world, so there is something for every palate. Our recommendations include Dishoom, Andina, Lahpet and Pizza East.

12 PM



1 PM

COLUMBIA ROAD FLOWER MARKET
Time to explore Columbia Road Flower Market, an oasis of greenery. Take in the sights of flowers and plants at this incredible market and enjoy the atmosphere amidst beautiful surroundings.



GET LOST IN A BOOKSHOP

If you're a bit of a book worm, or just love the idea of exploring an English book shop then Brick Lane Bookshop or Paper and Cup should be next on your list.

BOUTIQUE TIME

A visit to Shoreditch is not complete without a walk along Redchurch Street for a spot of shopping – even if it's of the window variety. The 2 mile stretch is home to an array of independent boutique stores and cool eateries, from Labour and Wait (a gorgeous home-ware store) to Ceccoli's restaurant for North Italian delights.

4 PM



BOXPARK

Boxpark is home to pop-up shops of the food, beauty and clothes variety as well as being home to various bar and food outlets. It is built from old shipping containers and calls itself "The World's first Pop-up-Mall"

5 PM

6.30 PM

DINNER
You can't really go wrong in Shoreditch when it comes to grabbing a bite to eat for dinner; home to an array of the best curry restaurants in London and every food type you could want. There really is something for everyone!



8 PM

QUEEN OF HOXTON ROOF TOP GARDEN OR JUNKYARD GOLF
Depending on how active you're feeling at the end of the day you could take on a spot of Crazy Golf at Junkyard Golf near Brick Lane or head over to Hoxton for some well-earned rest at the Queen of Hoxton's roof top garden.



10 PM

The Study Abroad Programme

Queen Mary has been welcoming study abroad students for over thirty years. Our established programme and team deliver excellence across all areas, ensuring first-rate student experience is at the forefront of our delivery. You choose if you want to study for a semester or full academic year and take advantage of all Queen Mary has to offer you!

Customise your study plan

Queen Mary offers a range of academic options across subject areas, with 950+ modules open to our study abroad students over the academic year. This means you can choose to study across four different disciplines, or immerse yourself in one subject area. We recognise the importance of being able to cross-register in different academic departments and we make this fully accessible to our students. All students are encouraged to take modules outside of their degree specialisations and many joint programmes run across the university. To make this possible, the course system used follows a flexible modular model. For the Study Abroad Programme this allows students the freedom to take modules from across the whole range of Queen Mary's academic departments.

Undertake an internship

Queen Mary offers students the opportunity to undertake an internship as part of their Study Abroad programme with us. This allows students to take three Queen Mary modules and be placed in to an internship in lieu of studying a fourth module.

For more details, please email us on study-abroad@qmul.ac.uk.

Study on a fully integrated programme

Queen Mary offers a fully integrated Study Abroad Programme so you will be living and studying alongside students from the UK and countries all over the world. Our study abroad students are immersed in everyday British culture, yet have a truly international experience.

Pre-register for modules

Our study abroad students can select their module choices before starting the programme. Students will normally take four modules per semester, but can make up to eight choices when module registration opens. Registration usually opens in May for full year and autumn semester students and October for spring semester students. We also allow students to add/drop modules when they arrive at Queen Mary during the first 2 weeks of term.

Access to an Academic Support Network

Queen Mary has Study Abroad Co-ordinators in every academic department who can advise you on module choices and requirements before you arrive and are an essential part of your support network during your studies.

Subject List:

Biological and biomedical sciences
Business and management
Chemical sciences
Comparative literature
Computer science
Design
Drama
Economics and finance
Electronics, telecommunications, music and audio systems
Engineering
English
Film studies
Geography and environmental science
Global health
Global Shakespeare
History
Information technology
Languages and cultures
Law
Linguistics
Materials science and engineering
Mathematical sciences
Multimedia and arts technology
Physics and astronomy
Politics and international relations
Psychology

For complete module listings please visit: www.qmul.ac.uk/modules

Find out more about the programme including assessments, transcripts and academic schools on our website: www.qmul.ac.uk/international/global-opportunities/incoming-students/study-abroad-programme

We also have a Summer School offering. Find out more about the Queen Mary Summer School on our website: www.qmul.ac.uk/summer-school

Student life

Accommodation

Our award-winning, self-contained campus is set beside the Regent's Canal, looking on to Mile End Park. It has a friendly, relaxed atmosphere; with plenty of greenery and attractive outdoor spaces here, it's easy to forget that you're in the middle of a bustling capital city.

On our Mile End campus, you will be able to enjoy all the advantages of a campus lifestyle; a friendly community of staff and students, safety and convenience. We have two shops, four cafés, two restaurants, a bar, a gym, a bookshop and a bank on site.

Study abroad students are able to apply for housing on campus in modern, self-catered flats. All rooms are single occupancy and the majority have en-suite (private) bathroom facilities. Typically, rooms are grouped in flats for between four and seven students with shared kitchen facilities.

Find out more about our accommodation on our website: www.qmul.ac.uk/international/global-opportunities/incoming-students/study-abroad-programme/accommodation

Peer Mentors: Buddy Scheme

Settling into a new country and university can be a daunting experience, but having a peer mentor is a great help! The Union Buddy Scheme matches current Queen Mary students, who have been on a study abroad programme with one of our partner institutions (mentors) with new Study Abroad Programme students (mentees) to ensure you get the most out of your time at Queen Mary.

The Buddy Scheme gives new students a chance to meet other new students on the Study Abroad Programme, as well as get tips and advice about university life from experienced mentors.

Support Services

At Queen Mary we are here to support you from before you arrive, throughout your studies and as valued alumni of our Study Abroad Programme. Our dedicated Global Opportunities Team is here to assist with any queries you may have, provide a full Welcome Programme and events, as well as provide ongoing support whilst you study with us. Queen Mary has a wide range of services to help you make the most of your time including our Advice and Counselling Service, Security Service, Multi Faith Centre and more.

QMSU

Student Groups, Societies, Sports and more

There are hundreds of student groups to get involved with that will help you make new friends, spark new interests, and gain new skills and experiences! With over 200 societies, 60 sports clubs and a variety of media outlets, there is something for everyone. Each of our societies provides a unique and exciting experience, offering a great opportunity to meet people with the same interests as you. Being part of a sports club is a great social experience and an excellent way to develop your sporting skills. Sports clubs compete in local, national and international competitions, or if the gym is more your thing we have our own gym on campus called QMotion. You can also take your first steps towards a career in journalism by getting involved

with student media. From radio to print, all of the student media outlets are inspiring and supportive places to get your voice heard.

The Union's Executive Officers represent and work for Queen Mary students. They make sure students' voices are heard when decisions are made that affect them and raise issues and run campaigns on their behalf. They also direct the Union in the way students want it to be run and to suit their needs. The Union also has Welfare Representatives at Mile End who represent the needs and voices of various student groups. Find out more: www.qmsu.org

Volunteering

The Union supports the local community through volunteering, fundraising and sports programmes. Volunteers log thousands of hours in one-off and ongoing opportunities with charities and not-for-profit organisations. Volunteering groups, set up by students, deliver projects in the likes of local hospitals, schools and community centres. Raise and Give (RAG) raises thousands of pounds each year for student-nominated projects.

Entertainment

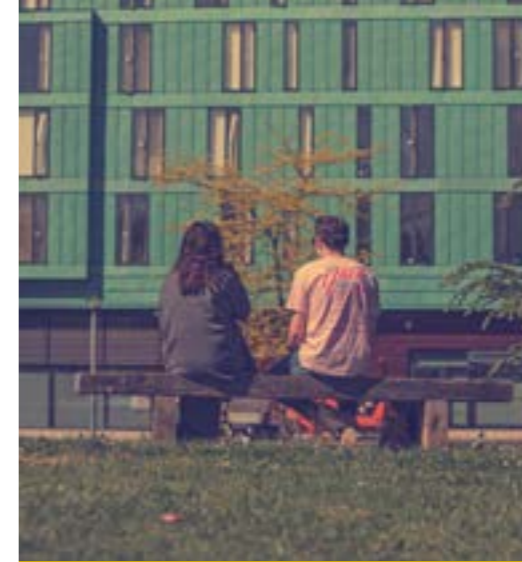
The Union runs a lively events programme offering a range of activities including day trips, live music, club nights, spoken word and more. Some past favourites include gala balls, language lessons, graffiti painting and a floating cinema. The Union's student groups also run a variety of events too, so there's always something to do!

Other facilities

The Union offers a range of other facilities including bookable rooms for student groups, social spaces to chill out and relax in, and a multi-faith space for prayer and contemplation. Find out more about QMSU at www.qmsu.org

Safety on campus

Queen Mary has a 24 hour Security Team who are available on campus to assist students and ensure the safety of the campus. They are available in person or via telephone.



How to Apply

Direct applications are submitted online at: www.qmul.ac.uk/international/global-opportunities/incoming-students/study-abroad-programme/apply

We also welcome applications via various programme providers. Please consult your home university's application procedures before submitting an application.

Eligibility

To be eligible to apply for the Queen Mary Study Abroad Programme you must meet the following entry requirements:

Academic:

- Completed a minimum of one year of university level study prior to studying on the programme
- Have a minimum CGPA of 3.0/4.0 or equivalent - students who are graded on a different grading scheme are welcome to apply. We welcome a range of international qualifications. If you are unsure about your eligibility please do contact us on study-abroad@qmul.ac.uk
- **Note:** Academic requirements vary depending on the modules you wish to study

English Language:

- If your first language is not English or you have not studied in an English speaking education system then we require proof of English Language proficiency.
- You must meet the minimum requirements of the University in order to be eligible. Queen Mary accepts IELTS and other equivalent qualifications*. Students who do not meet our minimum English Language requirements may be considered for the Study Abroad with English Language Programme. For details of the Study Abroad with English Language Programme please email study-abroad@qmul.ac.uk

*Academic requirements vary depending on the modules you wish to study

Key Dates

These dates are for students applying for the academic year 2020/21. For the most up-to-date deadlines please review our website.

	Autumn 2020	Spring 2021
Application deadline	31 May 2020*	31 October 2020
Semester begins	14 September 2020	25 January 2021
Internship application deadline	1 May 2020	1 October 2020
Semester ends**	11 December 2020	4 June 2021

*Please note that Housing application deadlines are earlier than the programme deadline. For a full list of key dates see our website: www.qmul.ac.uk/international/global-opportunities/incoming-students/study-abroad-programme/key-dates

**Students are required to remain on campus until assessments for all their modules have been completed and should not make any arrangements for leaving the university before they know the dates of their examinations. The exam timetable is published towards the end of the spring semester

Housing Application

Queen Mary offers a variety of student housing on our Mile End campus. Once you have firmly accepted an offer to study at Queen Mary you will be invited to apply for housing. The deadline to submit an application will be included in your invitation and this is submitted online. Application deadlines are usually end of May for the autumn semester and November for the spring semester*

*Please note that Housing application deadlines are earlier than the programme deadline. For a full list of key dates see our website: www.qmul.ac.uk/international/global-opportunities/incoming-students/study-abroad-programme/key-dates

Visas

Depending on your home country, you may be required to gain either a Short Term Student Visitor Visa or a Tier 4 Student Visa. Once accepted to Queen Mary, you will be provided with the documentation required to obtain your visa. For further information, please visit our website: www.qmul.ac.uk/international/global-opportunities/incoming-students/study-abroad-programme/visas-and-immigration

Equal Opportunities

Queen Mary welcomes students from all over the world. The University Charter states that the work of the University shall be carried out in a spirit of tolerance, freedom of opinion, mutual concern and community service, and undertakes to avoid discrimination against any person on the grounds of religion, race, sex or politics.

Study Abroad Students with disabilities

Queen Mary University of London has a specialist service to support disabled students, including what is called in the UK 'specific learning difficulties', e.g. dyslexia and dyspraxia. The Disability and Dyslexia Service (DDS) can provide a wide range of support, from additional time in examinations to access to assistive technology (such as text-to-speech software) to mentoring for students with mental health issues. Students requiring advice, guidance or support should contact the Global Opportunities Office. To ensure support can be provided it is important that the Global Opportunities Office be notified of any support required as soon as possible. Students need to provide recent evidence of their disability written in English to ensure they can access the services Queen Mary offers.

More information is available at: www.dds.qmul.ac.uk

Fees

Programme Fees

The following are the fees for the 2020/21 programme.

Tuition fees are based on 2020/21 prices. Please check our website for the latest fees information: www.qmul.ac.uk/international/global-opportunities/incoming-students/study-abroad-programme/fees-and-finance

Full Year - £18,750

Autumn Semester - £9,400

Spring Semester - £9,400

Part-time fees and one module fees can also be viewed on our website.

Housing Fees

Housing prices vary. The information below outlines the average cost based on 2020/21 fees including utilities. For the up-to-date fees please visit our website: www.residences.qmul.ac.uk/college/fees

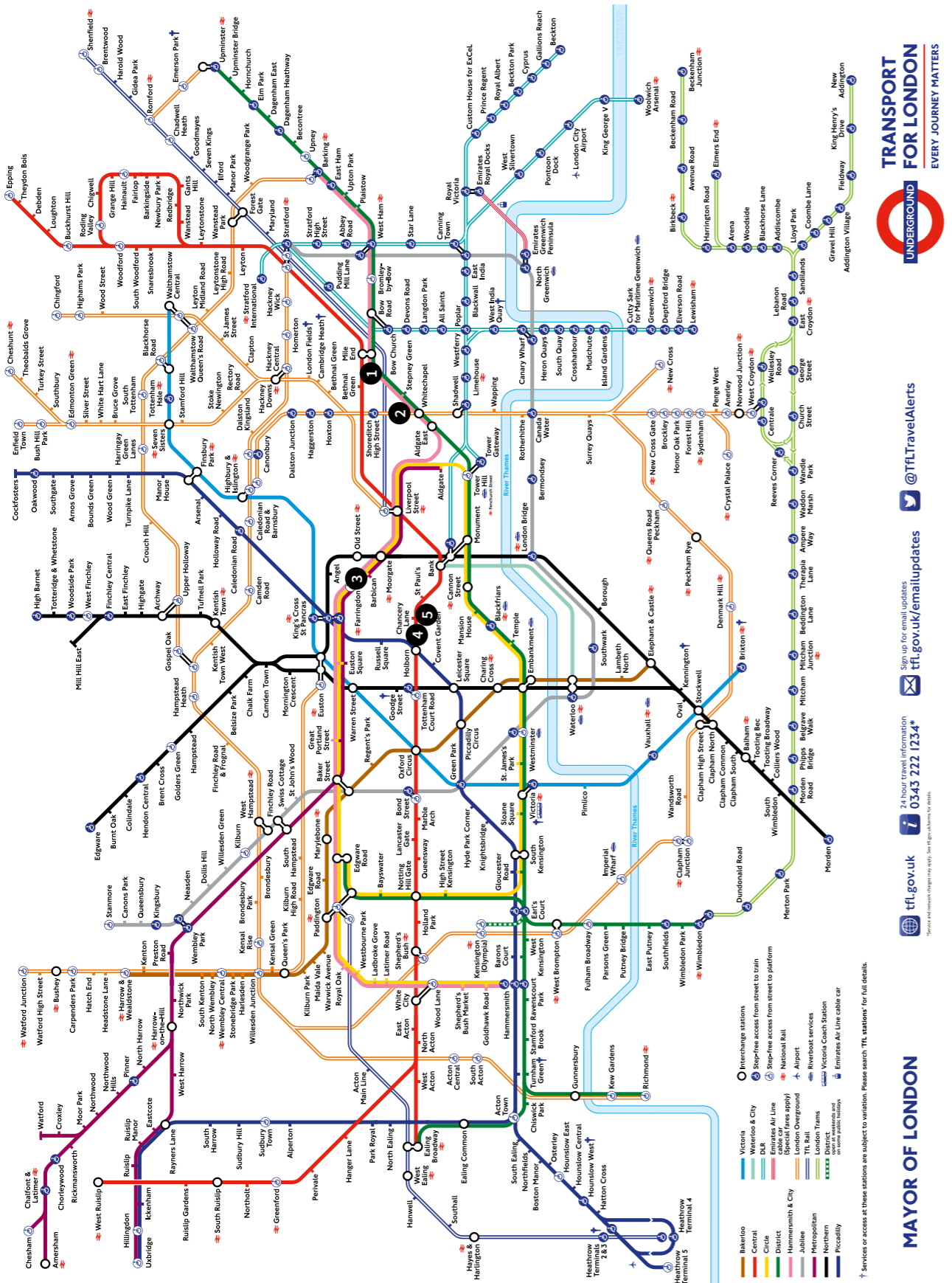
Minimum Cost £132.65 per week

Maximum Cost £212.17 per week

*Please note the minimum contract for autumn semester for study abroad students is 15 weeks and 22 weeks for the spring semester.



London Tube Map



MAYOR OF LONDON

Transport for London

Reg. user No. 18/EE/3323/P

tfl.gov.uk

24 hour travel information 0343 222 1234*

Sign up for email updates tfl.gov.uk/emailupdates

@TFLTravelAlerts



TRANSPORT FOR LONDON EVERY JOURNEY MATTERS

Version A TFL 05.7018

Correct at time of going to print

Improvement works may affect your journey, please check before you travel

1 Mile End campus

2 Whitechapel campus

3 Charterhouse Square campus

4 Incoln's Inn Fields campus

5 West Smithfield campus

Mile End Campus

For more detailed campus information, see: qmul.ac.uk/about/howtofindus

Educational/Research

ArtsOne	37
ArtsTwo	35
Bancroft Building	31
Bancroft Road Teaching Rooms	10
Peter Landin Building (Computer Science)	6
Engineering Building	15
G.E. Fogg Building	13
G.O. Jones Building	25
Geography	26
Graduate Centre	18
Informatics Teaching Laboratories	5
Joseph Priestley Building	41
Library	32
Law	36
Lock-keeper's Cottage	42
Mathematical Sciences Building	4
Occupational Health and Safety Directorate	12
People's Palace/Great Hall	16
Queens' Building	19
Scape Building	64
Temporary Building	61
Redevelopment site	39, 40

Residential

Albert Stern Cottages	3
Albert Stern House	1
Beaumont Court	53
Chapman House	43
Chesney House	45
Creed Court	57
France House	55
Feilden House	46
Ifor Evans Place	2
Lindop House	21
Lodge House	50
Lynden House	59
Maurice Court	58
Maynard House	44
Pooley House	60
Selincourt House	51
Varey House	49

Facilities

Advice and Counselling Service	27
Bookshop	22
Canalside - Student study space	63
Careers Centre	19
Clock Tower	20
CopyShop - Print services	56
The Curve	47
Disability and Dyslexia Service	31
Drapers' Bar and Kitchen	8
Ground Café	33
Lodge House	50
Lynden House	59
Maurice Court	58
Maynard House	44
Pooley House	60
Selincourt House	51
Varey House	49
Mucci's	29
Occupational Health Service/ Student Health Service	28
Octagon	19a
Qmotion Health and Fitness Centre	7
Sports Hall	7
Santander Bank	62
St Benet's Chaplaincy	23
Student Enquiry Centre	19
Students' Union Hub	34
Union Shop	9
Village Shop	52

Information

Visitors who require further information or assistance should please go to the main reception in the Queens' Building.

The smoking of cigarettes or tobacco products is **only** permitted at designated smoking areas/shelters indicated on this map.

Electronic cigarettes permitted on outside spaces **only**.

These premises are alarmed and monitored by CCTV; please call Security on +44 (0)20 7882 5000 for more information.

Key

- Library/bookshop
- Fitness centre
- Refreshment: Bar/Eatery/Coffee place
- Staff car park
- Bicycle parking
- Bicycle lockers
- Cash machine
- Smoking area/shelter



BRICK LANE VINTAGE



One way



Brick Lane

020 7134

Contact us

Global Opportunities Office
Queens' Building, Room E09
Tel: +44 (0)20 7882 6858
email: study-abroad@qmul.ac.uk
Blog: <https://qmulstudyabroad.blog/>

 @qmulstudyabroad

 @qmulgo

 @qmulstudyabroad

qmul.ac.uk

The information printed
in this brochure is correct
as of September 2020

If you require this publication in a
different accessible format we will
endeavour to provide this, where
possible. For further information
and assistance, please contact:
designandbranding@qmul.ac.uk