




Immerse Yourself in JAPAN

Study Abroad @
Akita International University
2021-2022



ACCESS

 **Airplane**
TOKYO
Haneda Airport
| 1 hour
Akita Airport
| 10 min by Car
AIU

 **Bullet Train**
Shinkansen
TOKYO
JR Tokyo Station
| 4 hours
JR Akita Station
| 30 min by Car
AIU



Center for International Affairs
Yuwa, Akita-City 010-1292 Japan
Phone: +81 18 886 5937
E-mail: international@aiu.ac.jp

<https://web.aiu.ac.jp/en/>  @AIUExchange
 / Official YouTube Channel for AIU Exchange Program





WHY CHOOSE AIU?

You want to immerse yourself in Japanese culture both inside and outside the classroom.

You aim to improve your Japanese while also taking courses in English in your major.

You seek interaction and friendships with students from Japan and around the world.

You want to learn more about Japanese culture, history and society in small, interactive classes.

200+
Local Community Visits

40+
Student Clubs

89%
On-campus Residence

11 LEVELS
of Japanese Language

100%
English-taught Classes

53%
International Faculty

26%
International Students from

31
Countries & Regions

200
Partners in

50
Countries & Regions

804
Total Students

14:1
Student-to-Faculty Ratio

18
Average Students / Class

You are looking for a unique adventure,

with experiences and friendships that will stay with you for life.

As of September 2019

AIU Features

Top Global University Leading Internationalization Category (Japanese Ministry of Education)

No.1 University for Engagement
THE Japan University Rankings 2020

No.1 University for Internationalization
Daigaku Tsushin, 2021

No.1 University for Environment
THE Japan University Rankings 2020

No.1 Small University
Daigaku Tsushin, 2021

No.10 Best University in Japan
THE Japan University Rankings 2020

No.4 Best Teaching Quality
Daigaku Tsushin, 2021

What To Expect

At the leading edge of higher education in Japan, AIU is the only university that offers an English-only content curriculum for all students. Classes are small and interactive so you can build relationships with your professors and classmates – from Japan and around the world. Since 89% of AIU students live on campus, you'll find unique chances to get involved, including club activities and student-led events. AIU – and Akita prefecture – is a peaceful environment to study and immerse yourself in Japanese culture. AIU students visit schools, participate in local festivals, and even work in rice fields. While urban Tokyo is only an hour flight away, by living in Akita, you can experience true, rural Japanese culture in a way that no city resident could.

Come and immerse yourself in Japanese Culture!

Contents

- P2 AIU Features
- P4 Basic Information about Akita Prefecture
- P5 Experience the Real Japan
- P6 Community Outreach Services
- P8 Clubs and Circles
- P10 All-English Curriculum
- P12 Japanese Language Program
- P14 Japan Studies Program
- P16 Global Business Program
- P18 Global Studies Program
- P20 Global Connectivity Program
- P22 Sample Course List
- P24 Nakajima Library
- P26 Campus Life and Academic Support
- P28 Housing and Dining
- P30 Themed Houses
- P31 On-campus Medical / Counseling Support
- P32 Semester / Year Program
- P33 Summer Program
- P34 Worldwide Network
- P36 Access to AIU

*The information in this pamphlet is based on the pre-pandemic university environment. Program contents, events, fees, and operating hours are subject to change in 2021-2022 based on the university's infection risk reduction measures. For details, please contact the Center for International Affairs (see back cover for contact information).



Akita

Where Traditional and Modern Japan Coexist



Overview

Akita City is located on the west coast of Japan's Tohoku region, the northern stretches of the main island, Honshu. A small city of approximately 300,000 residents, it is known for its stunning natural environment, wide variety of folk culture and performances, and its warm, welcoming people.



Basic Information / AKITA Prefecture

Population
950,077

Slightly smaller than Stockholm (974,073) or Naples (959,188)
As of December 2020

Population Density
81.63

Slightly bigger than Romania (81.4) and Greece (81.27)

Colleges and Universities
11

As of December 2020

Area
11,637.52km

Slightly smaller than Montenegro (13,812) or the US state of Connecticut (14,357)

International Residents
4,299

As of December 2019

Hospitals in Akita city
22 (including the Japanese Red Cross Akita Hospitals, located a 10-minute drive from AIU)

As of April 2020



四季 Beautiful Scenery and Activities for All Four Seasons on Campus



春 Spring



夏 Summer



秋 Autumn



冬 Winter

田舎と都会 Town and Country

In Akita, you are never far from wooded hills or lush fields, but there are pockets of urban convenience close at hand, as well, including shopping centers and a wide selection of restaurants around Akita Station.

秋田弁「んだ」 Akita-Dialect

The language you hear around Akita, especially in rural areas, can sound foreign even to native Japanese. You'll come away with unique vocabulary to prove you didn't study only from a textbook.

祭 Festivals

Akita is home to more designated Important Intangible Folk Cultural Properties than any other prefecture, such as the *Namahage* gods of Oga Peninsula and the haunting *Nishimonai Bon-Odori* dance, as well as large annual festivals like *Kanto Matsuri* and the Omagari Fireworks Festival that draw hundreds of thousands of visitors from Japan and around the world.

Annual Schedule

Fall Semester	September Fall Semester Classes Begin	Rice Harvest Season Fall Higan (Autumnal Equinox Week)
	October AIU Festival	Momiji Gari (Leaf Peeping) Season
	November	Harvest Festival Season
	December Fall Semester Classes End	Traditional New Year's Preparation The bells of New Years Eve, Mochi (rice cake) making etc.
January Optional Winter Program Classes Begin	February	New Year's Day Winter Sports Season
	March Optional Winter Program Classes End	Winter Festival Season Sedo Matsuri (Namahage Folklore), Kamakura Matsuri (Snow Dome Festival) etc.
	April Spring Semester Classes Begin	Hina Matsuri (Doll Festival) Spring Higan (Vernal Equinox Week)
Spring Semester	May	Rice Planting Season Cherry Blossom Festival
	June Study Abroad Fair	*Golden Week
	July Spring Semester Classes End	Mountain Climbing Season
	August	Beach Season
		Summer Festival Season Kanto Matsuri (One of the Biggest Festivals in Tohoku Region), Omagari Fireworks Festival, etc.

*the term for the week encompasses four of Japan's national holidays.

ALUMNI VOICE



Emily Nicole Riley-Smith
Lyon College, USA
Studied at AIU in Spring 2016

Studying abroad at AIU introduced me to many people from many different places. I shared so many beautiful experiences and cultural exchanges with the people I met. Some of my favorites were field trips to *Shirakami Sanchi*, *Kakunodate*, and the *Namahage* museum. I also enjoyed my courses on "Community Development" and "Japanese Cinema II." The hands-on learning and creative opportunities in these experiences opened doors for me to continue studying Japanese culture in an anthropology class back home, to find success on the JET program a few years later, and to create artwork that I'm proud of.

Now, I'm a graduate student at Iowa State University getting an MFA in Creative Writing and Environment, thanks in part to Akita's beautiful landscapes which helped inspire my interest in environmental studies. Even here, my experiences in Japan help me connect with the many people I've met, no matter where they are from. It's thanks to AIU that I have such wonder and joy for the world around me.

Experience The Real Japan Access To Authentic, Rural Japanese Culture

At AIU, you are not just a tourist, you are part of the community. Get involved in 200+ community events, 40+ clubs, and bus trips throughout the year to experience Akita and Japan your way!

Community Outreach



AIU's Research and Community Outreach Services (RCOS) arranges over 200 activities with the local community each year. Consistently rated among students' favorite aspects of AIU, these activities offer a unique backstage pass to experience rural Japanese life and culture.

SAMPLE ACTIVITIES

- Teaching English and cultural exchange activities at AIU and local schools
- School holiday parties including Halloween and Christmas with children
- Cooking local and international dishes with schools and local community groups
- Rice planting and harvesting with schools and farming communities
- Homestays and activities with local community
- Participating in set-up and execution of local festivals
- Testing and evaluating new local tourism programs



YouTube / AIU Community Outreach Services
https://youtu.be/5sMF5qou_RI

PROGRAM SPOTLIGHT



Kindergarten cultural exchange



Traditional Rice Planting



AIU Science Lab



Elementary English Teaching

STUDENT VOICE



Sarah Wooden
 Mississippi State University, USA

I really enjoyed all the RCOS activities. RCOS gave me the chance to experience what a typical Japanese school life is like. It was great being a part of Japanese culture in a way that was important to me and important for the kids' learning. I hope that I was a good influence in their life to help bridge the gap between America and Japan just a little bit more. My favorite part of doing RCOS events has been seeing the students faces as they enjoy their time listening and trying to speak with me.

STUDENT VOICE



Wei Lin Tan
 National University of Singapore, Singapore

It was such an eye-opening and heart-warming experience to be able to interact with elementary and junior high school students from the rural countryside of Japan. Coming from a country that is almost completely urban, I have always wondered what life growing up in the countryside would be like. It was thus a once-in-a-lifetime opportunity for me to be able to participate in activities such as rice farming with these students to learn more about life beyond modernity. I hope that the intercultural exchange via these RCOS initiatives will inspire local students to be global citizens in this rapidly diversifying world.

Clubs and Circles



Join one of AIU's 40+ clubs and circles to pursue your passions, build friendships, and practice intercultural communication in several languages. AY2020 clubs are listed below, but all students are also welcome to propose new ideas.

Japanese Culture

- Aikido
- Japanese Dance
- Kanto Team
- Karuta / Japanese Card Game
- Kendo
- Kimono
- Yatose Team / Japanese Contemporary Dance

Arts, Culture, and Music

- A Cappella
- Dance
- Debating Society
- Hawaiian Hula Dance
- Literature Club
- Musical Theater
- Rock Band
- Studio E-sha / Photography
- Quiz Club

Common Interests

- AIU Promotion
- AIU Revival and Reconstruction Supporter
- AUWA / Local Community Interaction
- Bible Study
- Environmental Club
- Happy People in Akita / Local Travel
- Korean Society
- LGBTQ Diversity
- Northeast Asia Student Round Table
- Service Travel ICC / International Community Service
- Sign Language
- TEDxAkitaIntIU
- V-ACT / Volunteer Group

Sports

- Badminton
- Baseball
- Basketball
- Extreme Martial Arts / XMA
- Futsal / Men's
- Futsal / Women's
- Rugby
- Running
- Shorinji Kenpo / Shaolin Boxing
- Soft Tennis
- Table Tennis
- Tennis
- Volleyball
- Wander Vogel



Environmental Club

環境クラブ

STUDENT VOICE

Yi Jiun Wu
National Taiwan University, Taiwan



I joined *Ohayashi* of AIU Kanto team, the musical accompaniment of the performance, as a flute player. Different from usual music groups, the Kanto *Ohayashi* performs only two pieces of fixed melody instead of a variety of tunes. While it may sound boring, there is always room for improvement for anyone, even the seniors who have played for years. The spirit is to master something through consistent practice. Participating in Kanto makes me feel close to Akita, and has given me some of the best experiences of my exchange. I loved the atmosphere at the performance during the school festival and am looking forward to the upcoming Kanto festival in the summer.

STUDENT VOICE

Patricia Batovska
Toulouse Business School, France



I have always been interested in environmental issues so I was very happy when I found that AIU has an environmental club. Although it was only second semester that the club had been in existence, we organised many interesting activities, also engaging other AIU students. Among others, we did campus and beach clean-ups, made the AIU Festival a bit more ZERO WASTE and organised an event with different speakers sharing their experience related to sustainability. It is a very nice club with welcoming atmosphere, aiming to make AIU the most eco-friendly university in Japan. And I am confident that they will!

All-English Curriculum

Small Classes, Mixed Japanese-International Classrooms

Gain exposure to global viewpoints in our small, diverse classrooms and acquire the credits you need from our wide range of course options.



AIU ACADEMIC ADVANTAGE

International Exchange of Ideas in English

AIU brings together students from around the world in discussion-based small classes for a unique exchange of ideas and values. Each semester, approximately 25% of our student body is made up of international students, representing an average of 31 countries and regions. The combination of Japanese and international students in small classrooms gives students the opportunity to forge personal connections across cultural barriers and develop intercultural communication skills.

Japanese Language and Japan Studies

Our Japanese Language and Japan Studies programs are second to none. AIU offers 11 levels of core Japanese each semester, with a placement test offered during orientation, as well as skill and practice courses at the upper levels. Japan Studies includes everything from Akita Studies and traditional arts, to advanced courses in Japanese Business Culture or Japan-U.S. Relations. Turn the page for more!

Ease the Stress of Study Abroad

AIU is Japan's only university to offer all content courses in English, so international students can be sure to earn the credits they need toward their degrees. Our course offerings and syllabi are available online (see page 22 for examples) and our 4.0 GPA scale and 15-week semester facilitate compatibility with systems around the world. Our unique Academic Calendar (page 32) makes it easy to study at AIU for either the fall or spring semester, or a full year!

Japanese Language PRG.

日本語学習



UNPARALLELED LANGUAGE IMPROVEMENT

AIU offers 6-credit, core Japanese courses, so you can earn a total of 18 credits (36 ECTS) of core Japanese in a single year, including the Winter Program, plus take additional skill-specific courses, as well! Our small sizes, internationally experienced professors, and extracurricular activities will give you many opportunities to practice and improve your Japanese skills.

Customize Your Studies

Eleven levels of core Japanese courses plus skill-specific courses allow you to meet your language goals. If you want to learn introductory Japanese, but cannot fit intensive classes into your schedule, AIU also offers JPL 100, a 3-credit, introductory course.

Personal Support and Mentorship

In addition to our experienced professors, graduate students from AIU's Japanese Language Teaching Practices Program and tutors from the Academic Achievement Center will eagerly work with you one-on-one. Take full advantage of AIU's small-campus environment to forge the close personal relationships with Japanese students that will help you succeed.

Course Offerings

Semester	JPL Course Level	Pre-Elementary	Elementary	Upper Elementary		Intermediate				Higher Intermediate		Advanced	
		100	110	210	220	310	320	330	340	410	420	460	470
Spring	Core		○	○	○	○	○	○	○	○			○
	Skill	Pronunciation											
		Reading											
		English-Japanese Translation											
		Kanji						Writing					
		Speaking						Speaking					
Fall	Core		○	○	○	○	○	○	○	○	○	○	
	Skill	Pronunciation											
		Reading						English-Japanese Translation					
		Kanji						Writing					
		Speaking						Speaking					
		Japanese-Chinese Translation											
Winter	Core			○	○	○	○	○	○				
	Skill	Reading Current Topics											
		Japanese Language in Films											



Dr. Yuko Abe
Head, Japanese Language Program

We encourage all international students to enroll in one of our 11 levels of core Japanese courses, whether you are an absolute beginner in studying Japanese or have passed the JLPT N1. Taking classes in Japanese language and culture, in addition to living with Japanese students and participating in extracurricular activities, will help you to make your study abroad experience most valuable and beneficial. Our instructors have many years of experience in working with international students, both in Japan and abroad. The small size of our classes and a wealth of additional individual support systems provide all the resources you need to reach your language learning goals.

STUDENT VOICE



Caleb Omar Maurice Rivers
The College of William and Mary, USA

My favorite class is the Reading Comprehension elective companion course to Intermediate Japanese. We were given reading pieces sculpted to our skill level to help us learn to use context clues in Japanese and familiarize ourselves with grammar we learned in our previous classes as well as through our independent studies. My professor was really kind and explained all of the tricky to understand sentences so that the next time they appeared, we could understand them on our own. I would recommend this class to anyone coming to AIU to strengthen their Japanese, as reading practice is an essential part of learning a language.

Japan Studies PRG.



CONNECT CLASSROOM AND REAL WORLD EXPERIENCE

Get the most out of your time in Japan by immersing yourself in the local culture and participating in community outreach activities, traditional festivals, and AIU student clubs. AIU's Japan Studies courses are designed to provide both scholarly and experiential perspectives, which will deepen students' insight into the nature of Japanese culture, society, and sensibilities.



Reach Across Disciplinary Boundaries

The Japan Studies curriculum has expanded to include a wider range of locally-focused courses that invite careful consideration across multiple, academic disciplines. Current Japan-focused course offerings incorporate analysis from political, legal, international, economic, historical, anthropological, religious, cultural, and aesthetic viewpoints.



From Traditional Arts to Popular Culture

AIU's Japan Studies course options enable students to perceive connections among current popular culture phenomena and the more traditional cultural roots from which these artifacts spring.

So, alongside coursework focused on anime and cinema, students may practice the traditional arts of tea ceremony and Ikebana (flower arrangement), as well as discover more about the philosophies behind these traditional aesthetic practices. AIU's traditional arts classes are held in a serene Japanese tatami mat room - the perfect place to quiet the mind and develop greater awareness of the Japanese spirit.



Course Spotlight

JAS 135

Traditional Japanese Arts II: Ikebana, Kabuki, Noh, Buyo
Dr. Kaeko Chiba

This course will guide you through the fascinating contemporary world of Japanese traditional arts, particularly Ikebana and flower culture in Japan. Through practicing Ikebana *jitsugi* (practice), investigating the *Iemoto* (grand master) system and studying styles of training in other art forms, you will gain valuable insight into the rich possibilities for the Japanese traditional arts in the future. This course is ideal for any students who are interested in Japanese traditional culture, and those who wish to start or continue studying the essence of Japanese society.



Dr. Yoshitaka Kumagai
Director, Japan Studies Center

The Japan-related curricular and co-curricular offerings and opportunities at AIU are unique and second to none anywhere in Japan. Students can enjoy taking courses that range from local traditional performing arts, Japan's traditional arts of tea and flower arrangement, or contemporary Japanese business world, to the interplay of popular culture and Japanese society today. Combine serious study of the Japanese language, coursework in English about Japan, and direct access to the people, fields, and cultural traditions of Akita, Tohoku, and Japan at large for an unforgettable learning experience.

STUDENT VOICE



Dayangku Nur Ihsan Binti Pengiran Kamis
Universiti Brunei Darussalam, Brunei

Akita Rural Studies is my favorite class because of how much insight it provided not just about Akita, but Japan as a whole. Our topics ventured into cultural values, societal systems and community interactions. It was intriguing to learn about the society from a different perspective, especially when I was able to learn about my own society as well. My professor created a welcoming environment that allowed interactive learning for a better understanding to topics applied to Akita, and our own communities. Akita Rural Studies is more than just discussing Akita academically, but also real-life situations.

Global Business PRG.

国際ビジネスと経済



THEORY AND PRACTICE FOR DIVERSE APPLICATIONS

In recent years, 100% of AIU graduates have had a job or graduate school admission offer prior to graduation, and it's no surprise why. AIU's business program provides students a firm grounding in economic theory as well as a practical education in in-demand skills, such as marketing, leadership and business data analysis. AIU offers students the opportunity to develop their business strategy skills in an interactive environment that will enable them to compete in today's market, respond to changes in the market, and lead, no matter what challenges the future may hold.



Dr. Clinton Watkins
Director, Global Business Program

AIU courses in business and economics prepare degree-seeking and international students for meaningful careers in these and other fields after AIU, whether they are joining the workforce here in Japan or abroad, or continuing study at the graduate level. The Global Business Program offers a mix of foundation and advanced courses in the fundamental disciplines of business. These include accounting, business culture, economics, finance, law, management, marketing, quantitative analysis and sustainability. We offer interactive classes that engage students in developing their critical thinking and communication skills, which are essential in the 21st century.



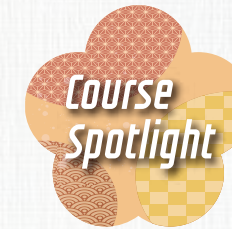
The Japanese Example and Regional Expertise

As Japan's longest-standing all-English undergraduate program, AIU offers the most comprehensive opportunity for international students to gain an inside perspective on the Japanese economy and business, with courses including Japanese Finance and Practices under Globalization, and Japanese Business Culture. Instructors across all courses introduce examples from Japanese media and current events to help students understand Japan's values in relation to its neighbors and trading partners around the world. Also, several instructors have substantial Japanese business experience.



Networking and International Cooperation Practice

In business and economics courses at AIU, you will develop your ability to communicate ideas in an international environment and exchange experience and opinions with classmates from around the world. Through presentations, teamwork, and case studies in a small class environment - averaging 18 students - you will work directly with Japanese and international students from 200 partners in 50 countries and establish professional connections that will follow you home and into your business career.

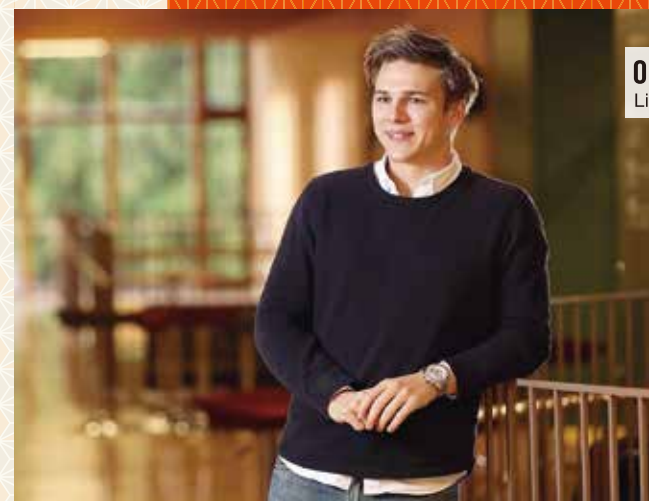


ECN 316
Quantitative Methods for Marketing
Dr. Wenti Du



How do businesses gather and use information to make effective marketing plans? This course provides students with knowledge of the practical statistical and quantitative techniques used to make efficient marketing decisions. Students design and conduct quantitative marketing research for real-world projects of their choice. They interpret the results of their quantitative research and learn how to make decisions that contribute to business success. The course is delivered as a combination of lectures and seminars.

STUDENT VOICE



Oscar Åberg
Linköping University, Sweden

My favorite course at AIU was Behavioral Finance. I have been interested in finance and economics for quite some time, but this course really made me want to deepen my understanding of financial decision making and markets. The course blends interesting theories with in-class experiments and real-world examples. This helps really connect the material to something tangible beyond the textbooks. I would recommend it to every person interested in business or economics, as it proves that human behavior really is what makes up the economy.

Global Studies PRG.



COURSES AVAILABLE ACROSS DISCIPLINES

The Global Studies Program is composed of three Clusters (academic fields): Global Society, Political Science and International Relations, and Sustainability Studies. The Global Studies Program invites students to take courses in diverse fields from those Clusters. Students will accumulate and deepen their knowledge and refine their flexible thinking and analytical skills without being confined to conventional ideas and values through active participation in learning activities.

Global Society Cluster

Amid globalization, humanity faces diverse issues such as poverty, disparity, migration, discrimination, and human rights, as well as friction caused by differences in religion, ideology, and culture. Students will explore a wide range of issues spanning from issues in local communities to matters on a national, regional, and global scale.

Political Science and International Relations Cluster

Courses in this cluster are diverse in multiple fields such as political science, geography, history, and international relations. Students will learn the laws and political systems of Japan and other nations in the world and international relations between two nations and multiple nations.

Sustainability Studies Cluster

With globalization and advances in science and technology in this age, various environmental and resource-related issues are requiring urgent attention. As seen in the 17 Sustainable Development Goals, or SDGs, adopted by the United Nations in 2015, we must now take concrete action toward sustainable development. Students will study the major issues that humanity faces, such as the construction of a sustainable environment, economy, and community, and attempt to find an ideal society for humankind and the environment from multiple perspectives.



SUS 310

Conservation and Sustainable Development
Dr. Yoji Natori



Conservation is at the heart of sustainable development. This course will cover the key aspects of conservation and demonstrate the roles of conservation in achieving sustainable development with real-world examples and case studies on wide range of views from the landscape and community perspectives (the satoyama approach) and the business consideration of natural environment (the natural capital concept). The course also covers the economic, social and policy frameworks in which these examples are embedded. Through the lectures, discussions and the group project, the course strives to drive home "If we cannot protect our only planet, nothing else matters."



STUDENT VOICE



Dr. Norihito Mizuno
Director, Global Studies Program

For students who are interested in studying about the world, a particular region, or a country, going abroad is an indispensable part of their academic experience, although it may seem daunting at first. With an all-English curriculum, small class sizes, and a balance of lecture and discussion courses, AIU offers a familiar environment to international students so that they will have the least trouble adjusting. Our strength is our active and diverse student body - many of our courses have at least 5-6 nationalities represented - that constantly provides each student with a welcoming environment.



Lillian Pesce
The University of New South Wales, Australia

My favourite class has been International Law and Institutions. I found this class extremely interesting as it allowed me to view and understand international law through a Japanese perspective, as opposed to the typical Western perspective I am usually exposed to. In this class we explored both the various ongoing international disputes and the benefits international law possesses. Additionally, we analysed the shortcomings of international legal systems with regards to the participating states. Further, my professor's experience with international law was very helpful in explaining the more difficult aspects of this class.

Global Connectivity PRG.

人文学とテクノロジーの結合



DIALOGUE BETWEEN HUMANITY, CULTURE, COMMUNICATION, AND TECHNOLOGY

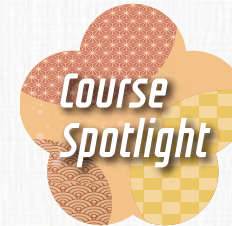
In our complex global society, where information spreads globally in an instant, we need to understand how digital technologies and innovations such as AI are changing us, and how we can live meaningful lives in a world that is in constant change. In the Global Connectivity Program, students explore both the humanities – culture, literature, and philosophy – which allows them to find meaning and values of our lives, and technologies, such as computation and AI, which are the foundation of our modern society. Students identify and explore connections between the humanities and technology and develop a holistic appreciation of their connectedness, allowing them to serve as effective bridges between these two domains in future society.

Humanity, Culture, and Communication Cluster

This cluster (academic fields) is a selection of humanities courses specifically designed to provide opportunities to acquire a broad scope of knowledge in areas such as history, culture, and art, and to develop language and analytical skills.

Technology and Future Society Cluster

Courses in this cluster will allow you to learn the importance of controlling the digital environment, rather than being controlled by it. The Technology and Future Society cluster explores the impact of digital technologies on all aspects of our modern lives, including how they shape the way we work, communicate, access, and process information.



PSY 310
Cyberpsychology
Dr. Pamela Taylor

Many users of internet technology find it indispensable, but also addictive in ways that traditional technology is not. This has led to curiosity about how cybertechnology can be so engrossing, as well as fears that it is altering how humans think. This class will investigate our interactions with cybertechnology, including how it harnesses innate features of our cognitive systems to create its compelling effects, and how it acts as a socio-cultural environment that influences how we think and act.



STUDENT VOICE



Camilla Guenther
Philipps-Universität Marburg, Germany

Critical Issues in the Digital Age was a class that not only taught but inspired me a lot. I experienced the class to be very in tune with time, as we touched upon many socially important and, well, critical processes. In my perception the class enabled us students to reflect critically and think further than what meets the eye, which I really appreciate. There was enough room for everyone to chime in with their ideas and thoughts to enhance the learning experience for everyone involved. I encourage those who want to be socially competent to add this class to their curriculum.



Dr. Andy Crofts
Director, Global Connectivity Program


The Global Connectivity (GC) Program is a course of study that invites students to make connections across the Humanities and the Sciences, including the 21st Century technologies which are so central to our lives. With diverse course offerings ranging from philosophy and art history, to information science and cyberpsychology, students are encouraged to explore the transdisciplinary nature of an International Liberal Arts education. Through discussion and collaboration, students will deepen their critical thinking, develop literacy over both modern technology and arts, and build an understanding of how human thinking and action are influenced. GC courses will therefore help students to make informed decisions in an uncertain, yet exciting, future.

Sample Course List

This is a partial list of courses offered in Academic Year 2021. Course availability is subject to change. For the most recent list, availability by semester, credit information, and specific requirements, please see <https://web.aiu.ac.jp/en/academic/>.

Course Levels 1XX: Foundational / 2XX: Intermediate / 3XX: Advanced / 4XX: Capstone seminars and some Foreign Language courses

Certificate of Concentration in Japanese Language and Culture Studies

International students can earn AIU's Certificate of Concentration in Japanese Language and Culture Studies by completing 15 credits of Japan Studies courses offered in English, including at least one course at the 300 level or higher, as well as 15 credits of Japanese language courses at or above the 320 level with a GPA of 2.50 or higher for the courses. Courses with  will be counted for the certificate.

Japan Studies

- JAS 115 Traditional Japanese Arts I
- JAS 135 Traditional Japanese Arts II
- JAS 150 Japan in the World
- JAS 200 Japanese Literature I
- JAS 202 Japanese History II
- JAS 220 Japanese Politics
- JAS 225 Japan's Constitution and Law
- JAS 250 Introduction to Japanese Society
- JAS 300 Japanese Art History in the Global Context
- ANT 300 Personhood and the Self: Anthropological Perspectives
- ART 300 Japanese Art History
- JAS 300 Japanese Literature II
- JAS 305 Religions in Japan
- JAS 310 Intercultural Perspectives on Japanese Society
- JAS 325 Foreign Policy of Japan
- JAS 367 A Modern History of Culture, Media and Language in Japan
- JAS 375 Japanese Cinema II
- JAS 380 Akita Studies II

Japanese Language

Pre-Elementary Course

- JPL 100 A Basic Introduction to Communicating in Japanese

Core Courses

- JPL 110 Elementary Japanese
- JPL 210 Upper Elementary Japanese I
- JPL 220 Upper Elementary Japanese II
- JPL 310 Intermediate Japanese I
- JPL 320 Intermediate Japanese II
- JPL 330 Intermediate Japanese III
- JPL 340 Intermediate Japanese IV
- JPL 410 Higher Intermediate Japanese I
- JPL 420 Higher Intermediate Japanese II
- JPL 460 Advanced Japanese I
- JPL 470 Advanced Japanese II

Skill Courses

- JPL 213/413/423/463 Speaking
- JPL 214 Kanji for Beginners
- JPL 311/321/331/341 Reading Comprehension
- JPL 314 Kanji Foundation
- JPL 315/415 Pronunciation
- JPL 324 Kanji Consolidation
- JPL 412/422 Writing
- JPL 413/423/463 Speaking
- JPL 431 Reading Current Topics
- JPL 433 Japanese Language in Films
- JPL 461 Reading Authentic Materials

Translation/Interpretation

- JPL 416 English-Japanese Translation
- JPL 417 Japanese-Chinese Translation
- JPL 427 Chinese-Japanese Interpretation

Japanese Language Teaching

*Native fluency of Japanese is required.

- JLT 181 Introduction to Japanese Language Studies
- JLT 211 Japanese Phonetics
- JLT 231 Teaching Japanese as a Second Language

Other Languages -

Chinese, French, Korean, Russian and Spanish

- 100/200/300 Levels I/II/III
- 400 Language Seminar: Discourse Practice (Chinese and Korean only)

Business & Economics

- ECN 205 Mathematical Methods for Economics
- ECN 220 Analysis of Economic Data
- ECN 230 International Financial Management
- ECN 250 Foundations of Managerial Decision-Making
- ECN 260 Organizational Behavior
- ECN 270 Principles of Marketing
- ECN 300 Management Principles and Practices
- ECN 301 Financial Theories and Applications

- ECN 308 Marketing Channel Strategy
- ECN 309 International Business Law
- ECN 312 Financial Accounting
- ECN 314 Managerial Accounting
- ECN 315 Japanese Finance and Practices under Globalization 
- ECN 316 Quantitative Method for Marketing
- ECN 317 Consumer Behavior
- ECN 318 Global Marketing
- ECN 320 International Trade
- ECN 323 Money, Banking and Financial Markets
- ECN 325 Economic Development
- ECN 327 Econometrics and Applications
- ECN 330 Corporate Finance
- ECN 334 Strategic Management
- ECN 337 Technology and Society
- ECN 343 Japanese Business Culture 
- ECN 344 Eco-Business and Sustainability
- ECN 347 Portfolio Management
- ECN 348 Behavioral Finance
- ECN 353 MBA Essentials
- ECN 365 EU Politics and Economy
- ECN 366 Intermediate Macroeconomics
- ECN 367 Open Economy Macroeconomics
- ECN 368 Environmental Economics
- ECN 390 Corporate Sustainability Strategies
- ECN 391 Digital Marketing Strategy

History

- HIS 210 U.S. History
- HUM 230 History and Philosophy of Science
- HIS 290 History of Modern China
- HIS 296 History of Modern Korea
- HIS 297 History of Modern Mongolia
- HIS 298 History of Modern Europe
- HIS 355 Transatlantic History of North America and Europe

Political Science & International Relations

- PLS 210 International Relations
- PLS 220 Introduction to Political Thought
- PLS 245 International Law and Institutions
- SOC 280 International Cooperation and Development I
- PLS 285 European Political Systems
- SOC 335 International Cooperation and Development II
- PLS 340 Japan-U.S. Relations 
- PLS 360 Modern Chinese Politics and Thought
- PLS 361 Foreign Policy of China
- PLS 362 Japan-China Relations 
- PLS 363 Developmental Politics in South Korea
- PLS 367 Politics and Society in Southeast Asia
- PLS 376 Law and Politics of International Organizations
- PLS 377 States and Markets

- PLS 378 International Security
- PLS 380 Borders and Migration
- PLS 381 Forced Migration
- PLS 385 Social Movements
- PLS 386 Political Communication
- PLS 387 Visual Politics
- PLS 390 U.S. Foreign Relations
- IST 391 Introduction to EU Studies

Sociology

- SOC 200 Research Methods in the Social Sciences
- SOC 285 Community Development
- SOC 310 Social Issues in the Global Age
- SOC 320 Childhood in the West
- SOC 325 Rural Society
- SOC 365 Chinese Society Today
- SOC 370 Mass Media and Society
- SOC 375 Taiwan Society Today

Environmental & Sustainability Studies

- SUS 200 Sustainable Futures
- SUS 300 Empirical Concepts and Methods of Sustainability Science
- SUS 310 Conservation and Sustainable Development
- ENV 320 Environmental Science in Global Perspective
- SUS 370 Remote Sensing Applications in Sustainability Science

Geography

- GEO 220 Geography of North America
- GEO 240 Geography of East Asia
- GEO 260 Urban Geography
- GEO 270 Rural Geography
- GEO 300 Diversity Matters

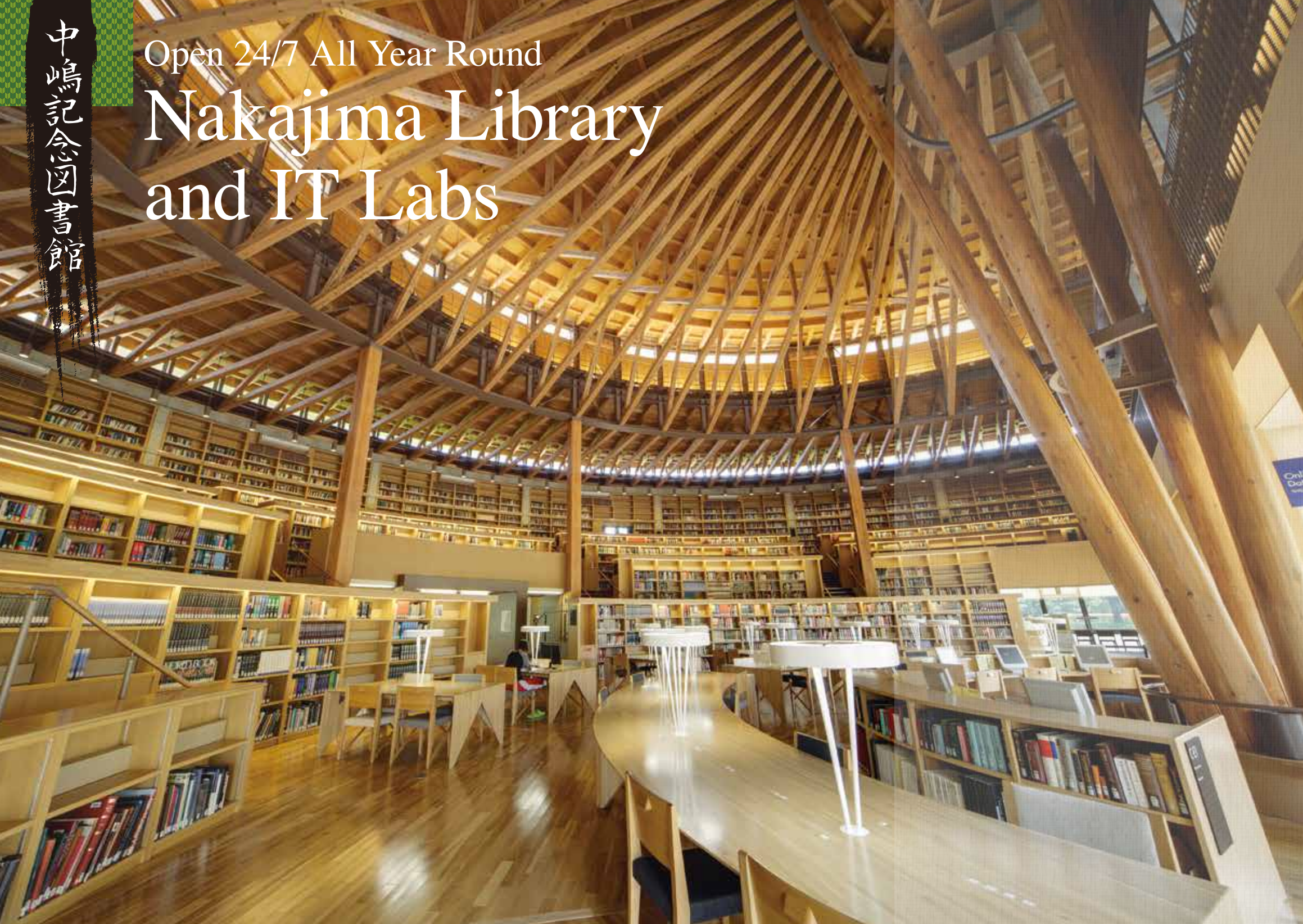
Digital Studies

- DGT 200 Learning and Technology
- DGT 220 Digital Story Telling
- MAT 230 AI, Games and Mathematics
- MAT 240 Mathematics for the Digital World
- DGT 300 Learning and Design
- PSY 310 Cyberpsychology
- CCS 320 Machine Learning and Big Data
- MAT 340 Poetry of Programming

Communication

- COM 260 News Media, Culture and Ideology
- COM 280 Science Communication
- SOC 290 Media Literacy
- SOC 371 Global Media

Open 24/7 All Year Round Nakajima Library and IT Labs



Nakajima Library is the place where you can access the study materials you need anytime around the clock. We have strong linguistics and social science collections, including subjects such as Japanese language, history, and culture. In addition to the bilingual online library catalog, our reference service is available in English to support your study needs.

Books: 80,000+ titles (50,000+ titles in English)

Journals: 200+ titles (100+ titles in English)

e-Books: 330,000+ titles

e-Journals: 1,500+ titles

Digital Resources: JSTOR, Nexis Uni, ProQuest Central, ScienceDirect, EBSCOhost eBook Collection, ProQuest eBook Central, Web of Science, etc.

Award-Winning Design

The library is a tourist destination and cultural icon, and receives many visitors throughout the year in addition to library users.

Built from local Akita cedar, with the ceiling patterned on a traditional umbrella, the library offers a warm, sheltering atmosphere, study rooms with individual workplaces, tables, and study rooms providing a variety of ideal study environments.

Hybrid Library



Nakajima Library collects both printed and digital materials for your study and research needs. Access over 330,000 e-books and more than 1,500 e-journals from anywhere. Our discovery service, "ONE-Search" will allow you to search both printed materials and digital resources at once, along with other open access materials online.

24-Hour Computer Labs



Inside the library building, we have computer labs with over 150 computers (Windows OS in English or Japanese), printers and scanners available. Students who prefer to use personal computers and other devices, are able to use free Wi-Fi on campus.

Most Beautiful Library in Eastern Japan

Nikkei, September 2015

Top 10 Must-See University Landmark

Nikkei, October 2016

Campus Life and Academic Support

Student-Centered Learning Space

From active learning facilities to guaranteed housing, meal plans, and on-campus medical support, AIU has your study abroad needs covered.



LANGUAGE DEVELOPMENT AND INTERCULTURAL STUDIES CENTER (LDIC)

Learning Resources for Multiple Languages

Improve your Japanese or work on a third or fourth language! The LDIC offers language resources for various learning styles.

Open Class

The Open Class is a chance for members of the AIU community to get a glimpse of a new language, topic, or lecture.

Rated-Ex (for experience)

This is an opportunity for members of the AIU student body, staff, or faculty to showcase talents and skills to the AIU community.

Infinity Room

The Infinity Room is both a physical (a self-access center) and a virtual space (online meetings) designed for experiencing Mathematics in a positive and enjoyable way. Emphasizing the playful, the aesthetic and the mind-blowing aspects, the room is a gateway into collaborative mathematical research with paths leading to other STEM subjects and to a well-rounded liberal art worldview.

ACADEMIC ACHIEVEMENT CENTER (AAC)

Free Peer Tutorial Support

Academic Reading/Writing/Presentation skills, Japanese language, and content course support.

Easy to Use

Support is available in English or Japanese and all students are welcome! Make your reservation online for tutorials for academic subjects or language.

Foreign Language Conversation Partner (FLCP) program

Through this program, you can meet one-on-one with speakers of other languages. Whether you want to practice a new language or help other students practice your language, it is a great opportunity to make new friends and develop your skills in a relaxed environment.



STUDENT VOICE

Daniel Coleman

University of Central Lancashire, UK

One of the greatest things that AIU offers is the opportunity to teach your own language through the Foreign Language Conversation Partner program, or FLCP for short. It is an amazing way to not only teach and help others with your native language, but also to make Japanese and international friends, and to spend time with them. It is rewarding to see your language partners improve after every single session, and it was lots of fun being in the FLCP as I had great, funny and memorable conversations.

Housing and Dining



100% GUARANTEED ON-CAMPUS HOUSING FOR INTERNATIONAL STUDENTS

More international and Japanese students cite living in the on-campus community as their favorite part of studying at AIU over all other aspects of life and study. When you live in Komachi Hall, Global Village, Sakura Village, or our Themed Houses in University Village, you are never more than a 10-minute walk from your friends, classes, and our wealth of on-campus activities.

Housing Options

		Komachi Hall	Global Village	Sakura Village	Themed Houses (University Village)
Room Style		Double occupancy room, two-room suite	Double occupancy	Single bedroom, triple occupancy suite	Double occupancy
Number of rooms (wheelchair accessible)		185 (1)	196 (4)	107 (2)	71
Toilet, Bath/Shower		One per suite	One unit bath per room	One unit bath per suite	One unit bath per suite
Kitchen		Common kitchen for the entire dorm	One per room (IH Range)	One per suite (IH Range)	One per suite (Gas stove)
Fees	Fall/Spring Per Semester	90,000 JPY (Fall or Spring)	112,000 JPY (Fall) 108,000 JPY (Spring)	184,000 JPY (Fall) 180,000 JPY (Spring)	114,000 JPY (Fall) 108,000 JPY (Spring)
	Winter Program	60,000 JPY	76,000 JPY	124,000 JPY	78,000 JPY
	Utilities	Utilities included			

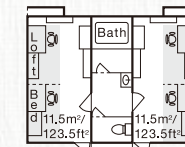
* Fees are subject to change.

Komachi Hall

All AIU degree-seeking students are required to live in Komachi Hall for their first year, so this is a great place to live if you want to make friends with Japanese students. Floor-by-floor activities, a common kitchen, and lounge with satellite TV and games make Komachi a natural choice for students who want more social interaction.



Komachi Hall



Campus Apartments

Global Village, Sakura Village, University Village

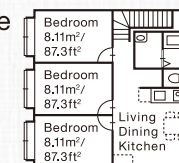
The campus apartments offer a little more privacy as well as the opportunity for students to cook for themselves. Global Village and University Village (which hosts the Themed Houses) have a double-occupancy bedroom connected to a kitchenette area. Sakura Village, AIU's newest housing facility, offers three separate bedrooms connected to a common Kitchen/Dining/Living area.



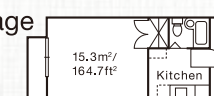
Global Village



Sakura Village



University Village



Dining Options



Cafeteria

With floor-to-ceiling windows, a piano, and TVs to catch up on international news, the cafeteria offers meal plans and a la carte options. Students with special dietary needs, from allergies to halal or vegan diets, can arrange for meals to meet their needs as well.



College Café

For a coffee shop or café environment, with a permanent menu and weekly specials, take a seat in College Café, inside or out. College Café also hosts club concerts and serves alcohol to students of age in the evenings.

Themed Houses



Themed Houses at AIU offer international and Japanese students the opportunity to live together based on common interests and work together on projects and activities throughout the semester. Themed Houses began with the Japan House (Japanese Arts and Culture House) in the Spring 2015 and the number of houses and their specific themes change each semester. Themes from the Spring 2020 Semester can be found below.

Themed Houses as of Spring 2020

- Japanese Nature & Culture House
- English Education House
- Coffee House (Political House)
- Nihongo House
- Russian (Slavic) Language & Culture House
- Sign Language House
- Fitness House

STUDENT VOICE



Samuel Chiappetta

University of Manitoba, Canada

A dormitory doesn't have to be just a place to sleep and eat; in my experience as a member of the Nihongo House I have certainly done more than that. From weekly events and activities to larger off-campus field trips, there was always lots of fun to be had in my dorm alone. Moreover, the Nihongo House is just one of several themed houses all offering their own unique experiences and activities. Whether you are into fitness or Japanese culture, there is a themed house for you! So before going back to old dorm life, why not liven thing up and check out the AIU themed houses?

ON-CAMPUS MEDICAL SUPPORT

AIU takes international students' health seriously. From pre-arrival consultation on students' existing conditions, allergies, and care, to first aid and medical follow-up during your study abroad, our medical staff is committed to ensuring that you remain healthy and comfortable throughout your stay. AIU became a smoke-free campus in April 2019.

Medical Services

All Free of Charge

- Pre-arrival medical consultation and care planning
- On-campus medical center and nurse for general first aid
- Local clinic / hospital referrals for examinations / prescriptions
- Advice and examples of Japanese / international medicinal equivalents
- Adaptable to international practices
- AEDs and First Aid kits available around campus
- Health maintenance and training events throughout the year

With regular hours and after-hours emergency contact information, international students can be sure that an English speaker will be close by in the event of any emergencies.

Health and Fitness Events



Students who take advantage of AIU's local community interaction, on-campus festivals, and club activities may find their study abroad experience to be more active than their average semester at home. AIU takes a proactive approach to medicine to help students remain in top condition, with health classes, fitness events, first aid/CPR training workshops, and flu shots available on campus.

COUNSELING ROOM

AIU's counseling staff has years of experience in helping English- and Japanese-speaking students through culture shock and adjustment to life in Japan. Although AIU offers a small campus environment with a close community and an emphasis on interaction, we understand that studying abroad can be a challenging adjustment.

Free Support

As with medical support, our counseling staff reviews students' needs prior to arrival to begin consultation and care planning, based on students' medical information form entries. During your stay at AIU, you can make an appointment by email or in person to discuss any of the stresses related to your study abroad or daily life. Our staff has particular expertise in intercultural adjustment and culture shock and can help with a wide range of issues including interpersonal relationships and time management. Of course, all counseling discussions are strictly confidential to protect students' privacy.

EXERCISE ROOM



Keep up your fitness habit or start a new one in Suda Hall's training room or on its indoor running track. The main hall also converts to an indoor court for team sports.

Short-Term Program

APPLICATION INSTRUCTIONS

Spend a semester or a year at AIU! We welcome new short-term international students from our 200 exchange partners in 50 countries during the fall and spring semesters. No Japanese language proficiency required.

Eligibility

- GPA: 2.5 (on a 4.0 scale)
- English Language Proficiency: TOEFL iBT® TEST 71 or equivalent.
- Completed at least 2 semesters prior to beginning your application.
- Be enrolled at your home university throughout your application and study abroad period.

Academic Calendar (AY 2021)

	Fall Semester 2021	Winter Program 2022	Spring Semester 2022**
Orientation*	August 25-31	n/a	April 1-8
Classes Begin	September 2	January 5	April 9
Classes End	December 20	March 1	July 29

*Orientation is mandatory for all students.

**Dates for Spring Semester 2022 are estimates only. All dates are subject to change. Please refer to our website (<https://web.aiu.ac.jp/en/academic/academic-calendar/>) for the most up-to-date information.

Fall and Spring Semesters

Start your studies at AIU in either the Spring or Fall Semester. Students are required by law to register for at least 12 credits, and they may take up to a maximum of 18 credits per semester.

Winter Program

Take extra credits for zero tuition during our Winter Program! This intensive, 7.5-week extension program is only available to students enrolled in the Fall semester. In winter, a variety of intensive Japanese language courses are offered so this is a great period for Japanese learners to improve Japanese language skills while at AIU.

Application Timeline

Application Period	Fall	Spring
Online Nomination Deadline	February 28	September 30
Online Application Opens	February 1	September 1
Application Documents Due by Post	April 1	November 1
Acceptance Letter Issued	April 30	November 30

Your Inbound Exchange Coordinator at AIU will support and guide you through the visa application process, housing application, and all other required steps. You can find additional details at: <http://web.aiu.ac.jp/en/short-term/semester-year-programs/application-timeline/>.

Tuition and Fees

	Fall / Spring Semester		Winter Program
	Exchange Partners	Fee-Paying	All Students
Admission Fee	Waived	28,200 JPY	n/a
Tuition	Waived	348,000 JPY	Waived
Housing	90,000 – 184,000 JPY		60,000 – 124,000 JPY
Bedding/Cleaning	20,000 JPY		7,050 JPY
Mandatory Meal Plan* (first two weeks)	14,670 JPY		n/a
Semester Meal Plan (optional)	60,000 (10-meal plan)-102,690 JPY (21-meal plan)		Approx. 31,000 JPY
Student Activity**	20,000 JPY		9,000 JPY
Deposit***	20,000 JPY (first semester only)		n/a
Total (Maximum)	361,360 JPY	737,560 JPY	171,050 JPY

*All students enroll in the 21-meal plan for their first two weeks. Semester-long 21-meal (3 meals a day) or 10-meal (weekday lunch and dinner) plans may be purchased after arrival. A la carte purchase and pre-paid cards are also available. **The Student Activity fee includes mandatory insurance (including Japanese National Health Insurance and Student Liability Insurance). ***Any remaining deposit will be refunded to students at the time of departure. Fees are subject to change.

Summer Program

Our Summer Program is a six-week, six-credit, intensive Japanese language and culture study program designed for highly motivated undergraduate students around the world. Participants can take elementary courses taught by experienced Japanese instructors to hone their Japanese language skills in a small class environment and through many cultural activities.

Eligibility

- GPA: 2.5 (on a 4.0 scale)
- English Language Proficiency: TOEFL iBT® 61 or equivalent.
- Completed at least 1 semester prior to beginning your application.
- Be enrolled at your home university throughout your application and study abroad period.

Program Schedule

- Japanese Language Classes in the morning
- Conversation Classes and Cultural Classes/Activities in the afternoon
 - >> Kitsuke (Kimono-wearing), Zazen (Meditation), Aikido (Japanese Martial Arts), Shodo (Calligraphy), Sado (Tea Ceremony)
- Field trips on Fridays and Weekends
 - >> Kakunodate area (famous for the traditional Samurai houses and cherry blossoms), Tazawako area (deepest lake in Japan), and Oga Peninsula area

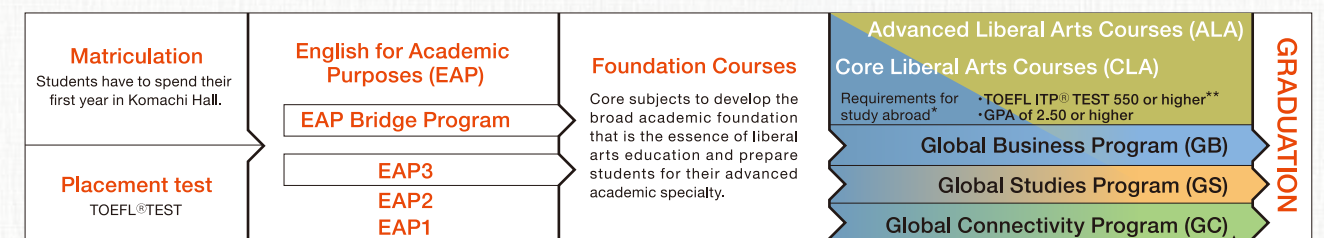


Degree Program

Four-Year Bachelor's Degree Program

While the majority of international students at AIU come from one of our partner universities for a semester or year of exchange, we admit international degree-seeking students, as well. Four-year international students at AIU follow the same requirements and course structure as Japanese students, including an all-English curriculum and required year of study abroad outside Japan.

4-Year Course Structure



*All students are required to study abroad one year
 **TOEFL, TOEFL iBT, TOEFL ITP and TOEIC are registered trademarks of Educational Testing Service (ETS).
 This brochure is not endorsed or approved by ETS.

*124 CREDITS *GPA of 2.00 or Higher

Worldwide Network

200 Exchange Partners in 50 Countries and Regions »As of March 31, 2021

AFRICA 3

-  **EGYPT** Cairo University
The American University in Cairo
-  **MOROCCO** Al Akhawayn University

ASIA 42

-  **BRUNEI** Universiti Brunei Darussalam
-  **CHINA** Jilin University
Nanjing University
Nankai University
Wuhan University
-  **HONG KONG** The Chinese University of Hong Kong
Hong Kong Baptist University
Lingnan University
The University of Hong Kong
-  **INDONESIA** Universitas Indonesia
-  **KOREA** Ajou University
Busan University of Foreign Studies
Ewha Womans University
Kankuk University
Korea Advanced Institute of Science and Technology
Korea University
Seoul National University
Sogang University
Yonsei University
-  **MACAU** Macau University of Science and Technology
University of Macau
-  **MALAYSIA** Universiti Sains Malaysia
University of Malaya
-  **MONGOLIA** National University of Mongolia
University of the Humanities
-  **PHILIPPINES** Ateneo de Manila University
-  **SINGAPORE** Nanyang Technological University
National University of Singapore
-  **TAIWAN** Fu Jen Catholic University
Kainan University
National Chengchi University
National Chi Nan University
National Taiwan Normal University
National Taiwan University
Tamkang University
Yuan Ze University


-  **THAILAND** Chulalongkorn University
Kasetsart University
Mahidol University
Thammasat University
-  **VIETNAM** Foreign Trade University
VNU University of Economics and Business

EUROPE 74

-  **AUSTRIA** FH Joanneum University of Applied Sciences
-  **BELGIUM** Ghent University
Vesalius College
-  **CROATIA** Zagreb School of Economics and Management
-  **CYPRUS** University of Nicosia
-  **CZECH REPUBLIC** Masaryk University
-  **DENMARK** Aalborg University
Aarhus University
-  **ESTONIA** Tallinn University
-  **FINLAND** Tampere University
University of Lapland
University of Vaasa
-  **FRANCE** Burgundy School of Business
ESC Rennes School of Business
NEOMA Business School
PSB Paris School of Business
Rennes 2 University
Sciences Po Grenoble
Sciences Po Lille
Sciences Po Rennes
Toulouse Business School
Université Toulouse - Jean Jaurès
-  **GERMANY** Ludwigshafen University of Business and Society
Philipps-Universität Marburg
University of Passau
-  **HUNGARY** University of Pécs
-  **IRELAND** Maynooth University
-  **ITALY** University of Bologna
University of Ferrara
University of Siena
University of Turin
-  **LATVIA** University of Latvia
-  **LITHUANIA** Vilnius University
Vytautas Magnus University

-  **MALTA** University of Malta
-  **NETHERLANDS** Amsterdam University of Applied Sciences
HAN International School of Business
Hanze University of Applied Sciences, Groningen
Leiden University

-  **NORWAY** NHH Norwegian School of Economics
University of Bergen
University of Oslo

-  **POLAND** University of Lodz
Warsaw School of Economics

-  **PORTUGAL** ISCTE-Lisbon University Institute
Universidade Catolica Portuguesa
University of Porto

-  **ROMANIA** University of Bucharest

-  **RUSSIA** Far Eastern Federal University
International University in Moscow
Lomonosov Moscow State University
National Research University Higher School of Economics

-  **SLOVAKIA** Comenius University

-  **SLOVENIA** University of Ljubljana

-  **SPAIN** Universidad de Alicante
Universitat Autònoma de Barcelona
Universidad de Burgos
Universidad Carlos III De Madrid
Universidad de Málaga

-  **SWEDEN** Linköping University
Linnaeus University

-  **SWITZERLAND** Eastern Switzerland University of Applied Sciences
Zurich University of Applied Sciences Winterthur

-  **UK** Keele University
Newcastle University
The University of Sheffield
University of Aberdeen
University of Central Lancashire
University of East Anglia
University of Essex
University of Exeter
University of Glasgow
University of Leeds
University of Sussex

NORTH AMERICA 65

-  **CANADA** Université Laval
University of Manitoba
University of Toronto
University of Victoria
University of Waterloo
University of Windsor
Wilfrid Laurier University

-  **MEXICO** The University of Colima

-  **USA** Alverno College
Ball State University
Beloit College
Centre College
The College of William and Mary
Dickinson College
Drexel University
Eastern Oregon University
George Mason University
The George Washington University
Gonzaga University
Hamline University
Hampden-Sydney College
High Point University
Ithaca College
Knox College
Lincoln Memorial University
Lyon College
Marist College
Millsaps College
Mississippi State University
Monmouth College
Oregon Institute of Technology
Oregon State University
Portland State University
Presbyterian College
San Diego State University
San Francisco State University
Southern Oregon University
- St. Cloud State University
St. Mary's College of California
St. Mary's College of Maryland
State University of New York at Oswego
Towson University
Union College
University of California, Berkeley
University of California, Davis
University of Colorado, Boulder
University of Delaware
University of Denver
The University of Hawai'i, Manoa
University of Illinois at Urbana-Champaign
The University of Kentucky
University of Maine at Farmington
University of Mary Washington
University of Mount Union
The University of New Mexico
University of Northern Iowa
University of Oregon
University of Richmond
University of South Florida
University of Utah
Ursinus College
Washington & Jefferson College
Western Oregon University
Western Washington University
Winona State University

OCEANIA 13

-  **AUSTRALIA** The Australian National University
Deakin University
Griffith University
La Trobe University
Macquarie University
Swinburne University of Technology
The University of New South Wales
University of Southern Queensland
The University of Sydney
The University of the Sunshine Coast
The University of Western Australia
-  **NEW ZEALAND** University of Canterbury
Victoria University of Wellington

SOUTH AMERICA 3

-  **CHILE** Universidad Adolfo Ibáñez
-  **PERU** Universidad del Pacifico
Universidad San Ignacio De Loyola

*List includes partnerships with specific faculties or colleges at partner universities.